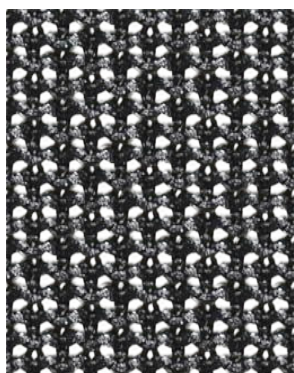
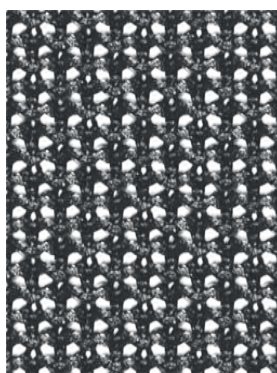


# NETZKARTE

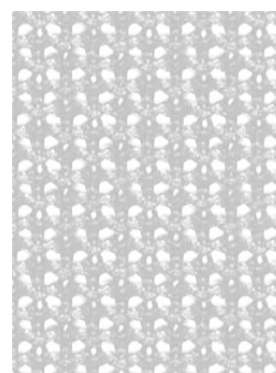
Technische Daten	Mera / Connex2	Duera / Cato Plus	Orbit Network
Material:	100% Polyester	100% Polyester	100% Polyester
Stoffgewicht / m <sup>2</sup> :	300 gr/m <sup>2</sup>	505 g	300 g
Scheuertouren:	50.000 (DIN EN ISO 12947-2, Martindale)	50.000 (DIN EN ISO 12947-2, Martindale)	
Lichtechtheit:	5, (DIN EN ISO 105XB02)	5 (DIN EN ISO 105-B02)	8 (DIN EN ISO 105-B02)
Pilling (Knötchenbildung):	5, pillt nicht	5, pillt nicht	5, pillt nicht
Reibechtheit nass/trocken:	4-5/4-5 (DIN EN ISO 105X12)	4/4 (DIN EN ISO 105-X12)	4-5/4-5 (DIN EN ISO 105-X12)
Brandschutznormen:		EN 1021, part 1 & 2	EN 1021, part 1; California TB 117
Umweltzertifikat:		OekotexStandard 100	



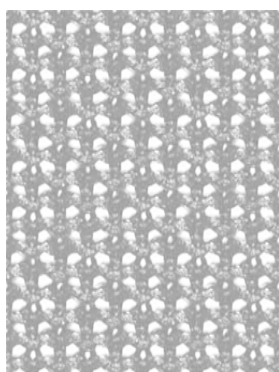
Mera / Connex2 2080 schwarz



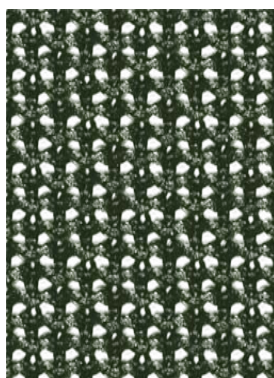
Mera / Connex2 2017 anthrazit



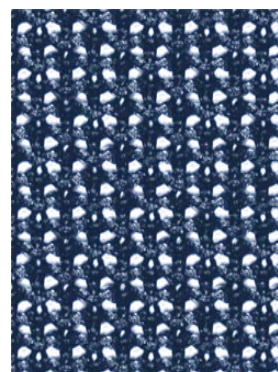
Mera / Connex2 2003 weiß-grau



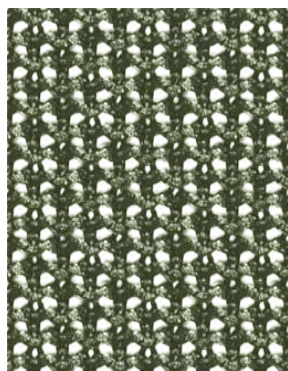
Mera / Connex2 2018 stein



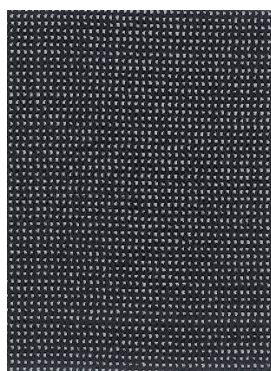
Mera / Connex2 2019 smaragd



Mera / Connex2 2020 saphir



Mera / Connex2 2021 olive



Orbit Network 2080 schwarz



Duera / Cato Plus 2080 schwarz