

CHICAGO

CHICAGO (Camira Urban Plus)	Preisgruppe 4
Material: 100 % Recyceltes Polyester FR	
Stoffgewicht/lfm: 450 g +/- 5%	
Breite: 140 cm	
Scheuertouren: 100.000 Martindale (BS EN ISO 12947-2)	
Lichtechtheit: 6 (BS EN ISO 105-B02:1999)	
Pilling (Knötchenbildung): 5, pillt nicht	
Reibechtheit nass/trocken: 4/4 (BS EN ISO 105-X12:2002)	
Brandschutznormen: Schwer Entflammbar (DIN 4102:B1; BS EN 1021 -part 1&2; BS 7176:2007; Low Hazard; BS 5852:2006, Section 4, Ignition Source 5; BS 1776:2007; Medium Hazard; NF D 60 -013:2006; NF - P - 92 - 507 M1; UNI 8456 & UNI 9174 Class 1)	
Ökologie: Nicht schwermetallhaltige Farbstoffe, Umweltverträglich (EU-Umweltzeichen "Die Blume")	

Stoffe und Leder sind als Rohmaterial sehr unterschiedlich in Farbe und Struktur. Daher ist bei Einfärbungen von Leder und Stoff aus verschiedenen Fertigungspartien nicht immer eine exakte Übereinstimmung der Farben gewährleistet. Diese geringen Farbabweichungen bei Nachlieferungen und Ergänzungen berechtigen jedoch nicht zum Ersatzanspruch.

CHICAGO (Camira Urban Plus)	Prijsgroep 4
Materiaal: 100 % Recycled Polyester FR	
Stofgewicht/str.m.: 450 g +/- 5%	
Breedte: 140 cm	
Aantal toeren: 100.000 Martindale (BS EN ISO 12947-2)	
Lichtechtheid: 6 (BS EN ISO 105-B02:1999)	
Pluizen: 5, pluist niet	
Wrijvingechtheid nat/droog: 4/4 (BS EN ISO 105-X12:2002)	
Brandveiligheidsnormen: Moeilijk ontvlambaar (DIN 4102:B1; BS EN 1021 -part 1&2; BS 7176:2007; Low Hazard; BS 5852:2006, Section 4, Ignition Source 5; BS 1776:2007; Medium Hazard; NF D 60 -013:2006; NF - P - 92 - 507 M1; UNI 8456 & UNI 9174 Class 1)	
Ecologie: Kleurstoffen die geen zware metalen bevatten, Milieuvriendelijk (EU-milieukeurmerk "De bloem")	

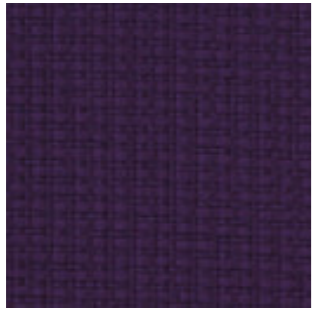
Stoffen en leer als grondstoffen zeer verschillend in kleur en structuur. Daardoor is bij inkleuring van leer en stof uit verschillende partijen, niet altijd een exacte overeenstemming van de kleuren gewaarborgd. Deze geringe kleurafwijkingen bij naleveringen zijn onontkoombaar en rechtvaardigen geen reclames.

CHICAGO (Camira Urban Plus)	Price group 4
Material: 100 % Recycled Polyester FR	
Fabric weight/lm: 450 g +/- 5%	
Width: 140 cm	
Abrasion resistance: 100.000 Martindale (BS EN ISO 12947-2)	
Light fastness: 6 (BS EN ISO 105-B02:1999)	
Pilling: 5, no pilling	
Colour fastness to rubbing wet/dry: 4/4 (BS EN ISO 105-X12:2002)	
Fire Resistance Standards: Flame retardant (DIN 4102:B1; BS EN 1021 -part 1&2; BS 7176:2007; Low Hazard; BS 5852:2006, Section 4, Ignition Source 5; BS 1776:2007; Medium Hazard; NF D 60 -013:2006; NF - P - 92 - 507 M1; UNI 8456 & UNI 9174 Class 1)	
Ecology: Non metallic dyestuffs, Environmentally sound (EU Eco-label "The Flower")	

Due to the natural variations in the colour and structure of the raw materials it is impossible, when dyeing fabrics and leather from different production lots, to guarantee that the final shades will match perfectly in every case. Minor discrepancies in the colour of goods supplied as subsequent or supplementary items cannot therefore be regarded as justification for any claim to replacement.

CHICAGO (Camira Urban Plus)	Groupe de prix 4
Composition: 100 % Polyester Recyclé FR	
Poids du tissu/ml: 450 g +/- 5%	
Largeur: 140 cm	
Nombre de tours d'abrasion: 100.000 Martindale (BS EN ISO 12947-2)	
Tenue à la lumière: 6 (BS EN ISO 105-B02:1999)	
Boulochage: 5, ne bouloche pas	
Résistance au frottement à humide/sec: 4/4 (BS EN ISO 105-X12:2002)	
Normes anti-feu: Difficilement inflammable (DIN 4102:B1; BS EN 1021 -part 1&2; BS 7176:2007; Low Hazard; BS 5852:2006, Section 4, Ignition Source 5; BS 1776:2007; Medium Hazard; NF D 60 -013:2006; NF - P - 92 - 507 M1; UNI 8456 & UNI 9174 Class 1)	
Ecologie: Teintures non métalliques, Compatibilité environnementale (éco-label européen "La fleur")	

Le cuir et les tissus sont en tant que matériaux de base différents en couleur et structure. C'est pourquoi il n'est pas toujours possible d'obtenir une totale similitude des tons lors de la teinture du cuir ou du tissu dans les différents départements de fabrication. Ces légères différences de teinte ne justifieront pas un remplacement.

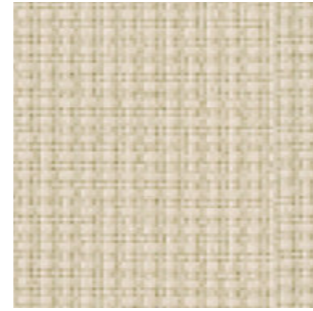


*Intersection YN205 0489

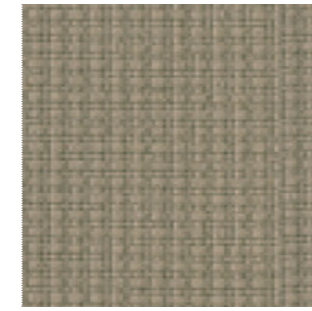


*Loft YN201 0490

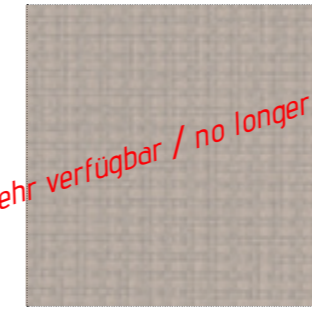
nicht mehr verfügbar / no longer available



Living YN108 0478

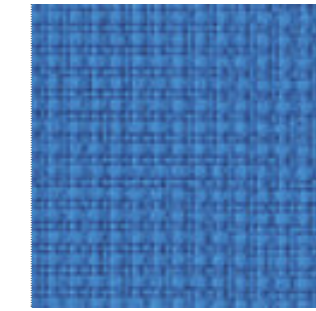


*District YN212 0483

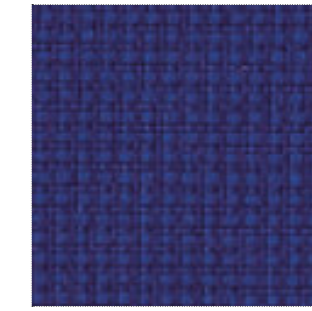


*Bedsit YN158 0488

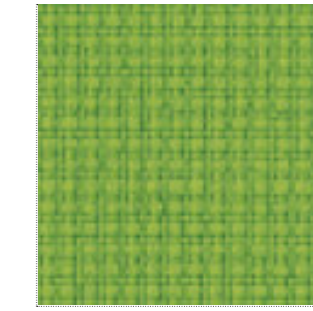
nicht mehr verfügbar / no longer available



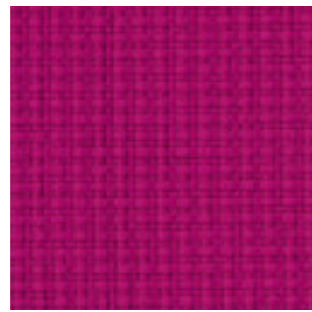
*Penthouse YN202 0469



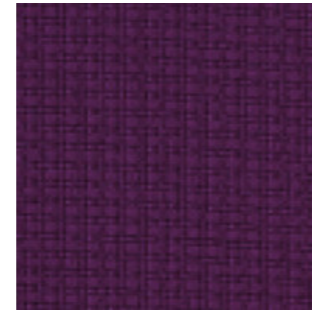
Conurbation YN082 0470



*Uptown YN200 0465



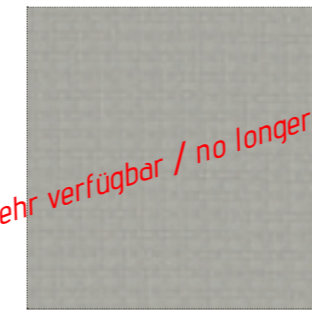
*Cosmopolitan YN203 0485



*Graffiti YN204 0487

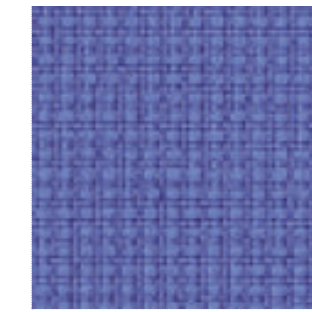


Bench YN091 0480

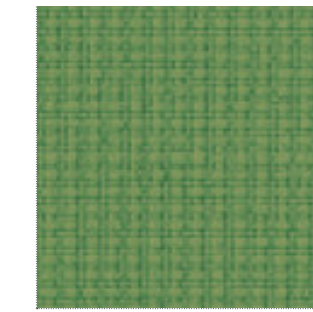


*Downtown YN190 0481

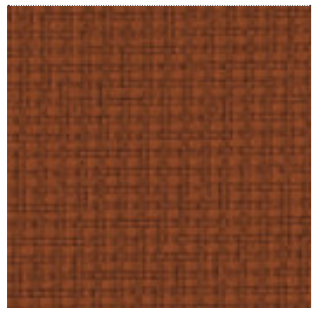
nicht mehr verfügbar / no longer available



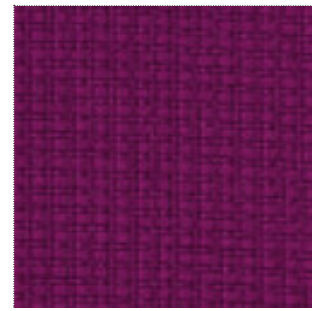
*Ringroad YN208 0471



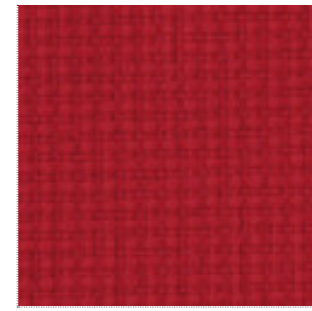
Suburbia YN159 0468



Precinct YN027 0466



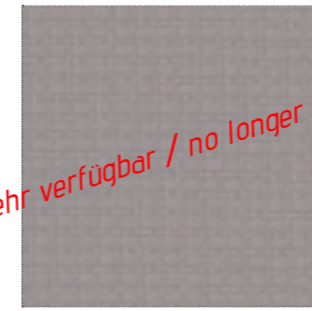
*Freeway YN211 0486



Congestion YN079 0462



*Underground YN145 0479

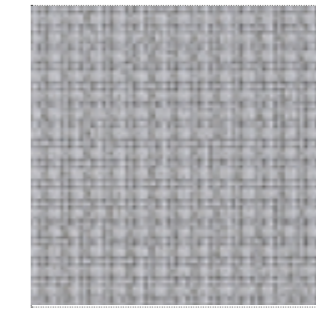


Innercity YN086 0482

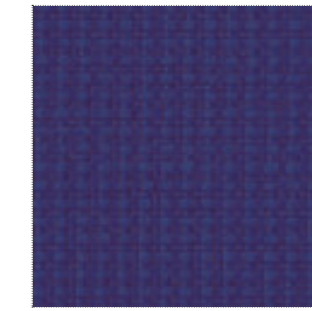
nicht mehr verfügbar / no longer available



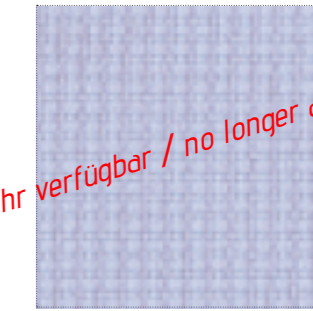
*Junction YN083 0473



Sidewalk YN094 0476



*Streetsmart YN209 0475

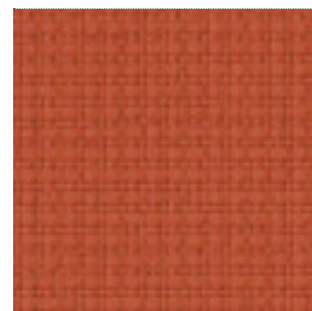


*Metropolis YN097 0463

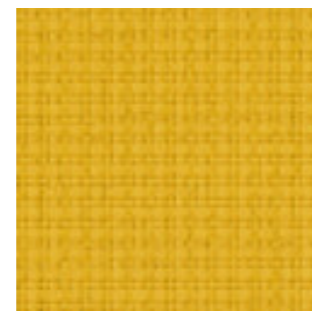
nicht mehr verfügbar / no longer available

* Farben mit längerer Lieferzeit (i.d.R. 5-6 Wochen)
Alle übrigen Farben mit Standardlieferzeit (i.d.R. 3-4 Wochen)

* Colours on longer lead-times (typically 5-6 weeks)
All other colours on standard lead-times (typically 3-4 weeks)



Highrise YN076 0464



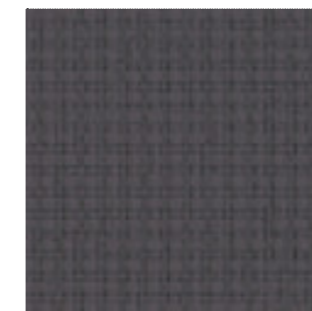
*Avenue YN148 0461

* Couleurs ayant un délai de livraison plus long (5 à 6 semaines en règle générale)
Toutes les autres couleurs ont un délai de livraison standard (3 à 4 semaines en règle générale)

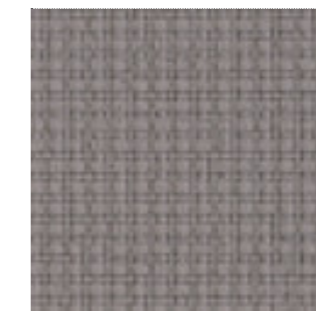
* Kleuren met langere levertijd (doorgaans 5 à 6 weken)
Alle overige kleuren met standaard levertijd (doorgaans 3 à 4 weken)



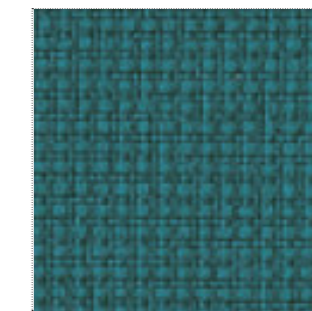
Subway YN009 0484



Square YN207 0474



*Curb YN206 0467



*Boulevard YN160 0477



Nightowl YN210 0472