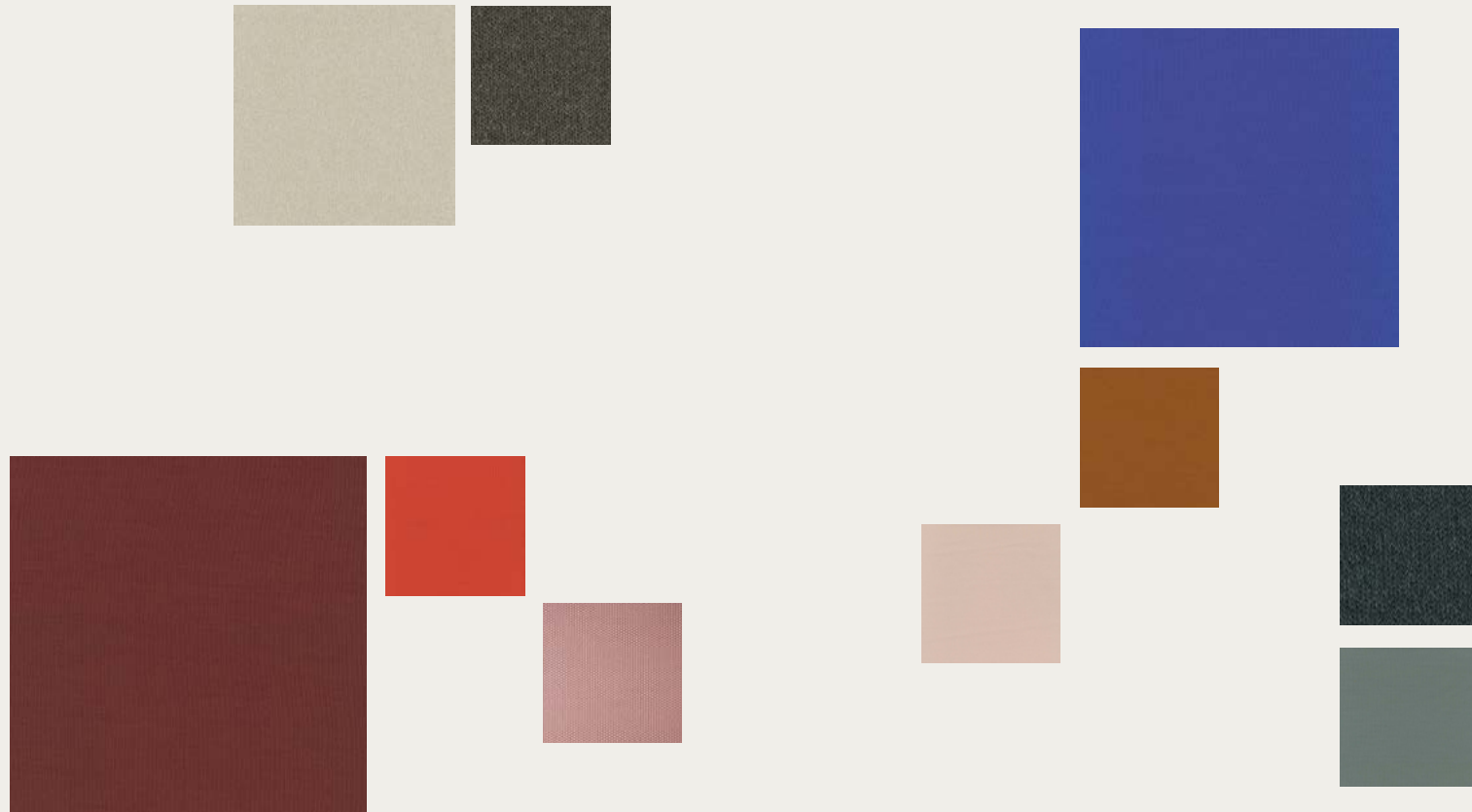


CAPSULE

FABRICS COLLECTION



casala®



Technical specifications

COMPOSITION	100%PES FR	ASSESSMENT OF IGNITABILITY (CONTINUED)	
WIDTH	175	EN 1021 PART 1 / 2	PASS
LINEAR WEIGHT	840 GR/ML + 5%	UNI 9175 IM CLASE 3.IM	PASS
SEAM SLIPPAGE RESISTANCE (EN ISO 13936/2)	WARP 1,70 / WEFT 2,50	CAL TB 117:2013	PASS
ABRASION RESISTANCE		NFPA 260:2013	PASS
END POINT (A) FULLY WORN OFF (B) (EN ISO 12947/2)	50.000 (B)	IMO FTB 2010 PART 8 A 652 (16)	PASS
CHANGE ASPECT 3000C (EN ISO 12947/4)	3-4	LIGHTFASTNESS (EN ISO 105-B02)	6-7
PILLING RESISTANCE (EN ISO 12945/2)	4-5	COLOUR FASTNESS TO RUBBING (EN ISO 105-X12)	DRY 5 / WET 4-5
ASSESSMENT OF IGNITABILITY		DIMENSIONAL CHANGE IN DOMESTIC WASHING AND DRYING	
BS5852 SCHE. PART 4 SOURCE 0 / 1	PASS	(EN ISO 3759 / EN ISO 6330 / EN ISO 5077)	WARP -3% / WEFT -1,50%
BS7176 LOW HAZARD	PASS		

The colours in this publication may differ to the original product. We recommend requesting a product sample.
 Sample service and further information: WWW.CASALA.COM/SAMPLES





0453

FABRICS CAPSULE

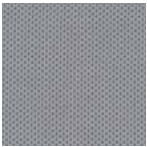


FABRICS CAPSULE

The colours in this publication may differ to the original product. We recommend requesting a product sample.
Sample service and further information: WWW.FEBRIK.COM/SAMPLES



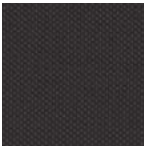
0734



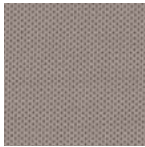
0114



0134



0184



0224



0244



0284



0444



0564



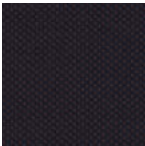
0624



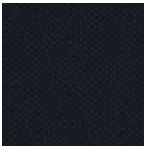
0654



0684



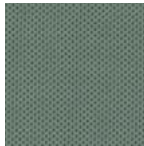
0784



0794



0874



0934

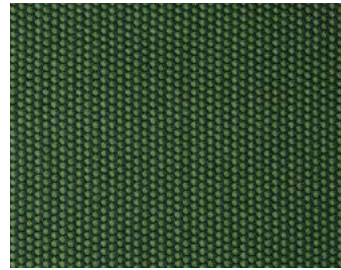


0984

FABRICS CAPSULE

FABRICS CAPSULE

The colours in this publication may differ to the original product. We recommend requesting a product sample.
Sample service and further information: WWW.FEBRIK.COM/SAMPLES



0961



0101



0121



0151



0191



0221



0261



0291



0421



0441



0461



0621



0641



0651



0661



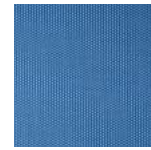
0671



0691



0721



0751



0761



0771



0791



0851



0871



0891



0921



0951



0971

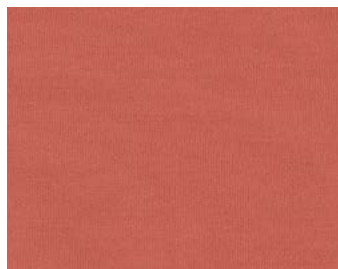


0991

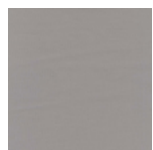
FABRICS CAPSULE

FABRICS CAPSULE

The colours in this publication may differ to the original product. We recommend requesting a product sample.
Sample service and further information: WWW.FEBRIK.COM/SAMPLES



0521



0111



0141



0201



0241



0271



0351



0411



0441



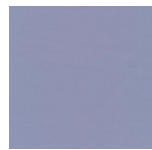
0551



0571



0681



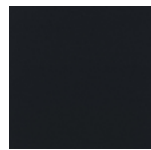
0711



0741



0751



0791



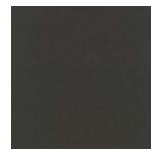
0921



0941



0961



0971

FABRICS CAPSULE

FABRICS CAPSULE

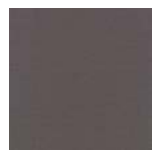
The colours in this publication may differ to the original product. We recommend requesting a product sample.
Sample service and further information: WWW.FEBRIK.COM/SAMPLES



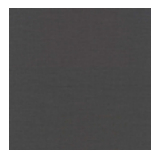
0747



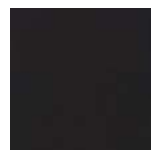
0107



0137



0167



0197



0207



0227



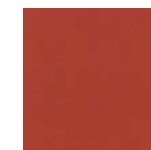
0427



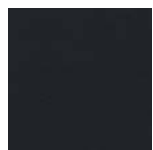
0437



0527



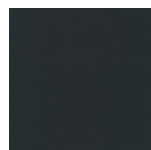
0547



0797



0857



0997

FABRICS CAPSULE

FABRICS CAPSULE

SHOWROOMS

Casala
Meubelen Nederland bv
Rolweg 10
4104 AVCulemborg
The Netherlands
+31 (0)345 51 73 88
info@casala.com

Design Post Amsterdam
Cruquiusweg 111m
1019 AG Amsterdam
The Netherlands
+31 (0)20 463 39 80
info@palau.nl

Casala
Objektmöbel GmbH
Magirusstraße 16
31867 Lauenau
Germany
+49 (0)5043 71 0
casala@casala.com

Casala Ltd
2 Sycamore Street
Clerkenwell, EC1Y 0SF
London
United Kingdom
+44 (0)20 3958 0058
sales@casala.com

Casala S.à.r.l.
54 rue du 19 Janvier
92380 Garches
France
+33 (0)1 47 10 02 22
contact@casala.com

www.casala.com

casala®