

CHICAGO (Camira Urban) Preisgruppe 4

Material: 100% post-consumer recycled Polyester
Stoffgewicht/lfm: 340 g +/- 5%
Breite: 140 cm
Scheuertouren: ≥ 100.000 Martindale
Lichtechtheit: 6 (ISO 105 - B02)
Pilling (Knötchenbildung): 5, pillt nicht
Reibechtheit nass/trocken: 4/4 (ISO 105 - X12)

Brandschutznormen: schwer entflammbar¹ (DIN 4102:B1; BS EN 1021 - part 1&2; BS 7176 Low Hazard; BS 5852 Ignition Source 5; BS 7176 Medium Hazard; NF D 60-013; ÖNORM A 3800-1; (mit CMHR 58kg/m³ Schaum); UNI 9175 Classe 1 IM)

Ökologie: Nicht schwermetallhaltige Farbstoffe, Zertifikat EU Ecolabel, Zertifikat OEKO-TEX® Standard 100, hergestellt aus 100% recyceltem Polyester

Stoffe und Leder sind als Rohmaterial sehr unterschiedlich in Farbe und Struktur. Daher ist bei Einfärbungen von Leder und Stoff aus verschiedenen Fertigungspartien nicht immer eine exakte Übereinstimmung der Farben gewährleistet. Diese geringen Farbabweichungen bei Nachlieferungen und Ergänzungen berechtigen jedoch nicht zum Ersatzanspruch.

CHICAGO (Camira Urban) Prijsgroep 4

Materiaal: 100% post-consumer recycled polyester
Stoffgewicht/str.m.: 340 g +/- 5%
Breedte: 140 cm
Aantal toeren: ≥ 100.000 Martindale
Lichtechtheid: 6 (ISO 105 - B02)
Pluizen: 5, pluist niet
Wrijvingechtheid nat/droog: 4/4 (ISO 105 - X12)

Brandveiligheidsnormen: moeilijk ontvlambaar¹ (DIN 4102:B1; BS EN 1021 - part 1&2; BS 7176 Low Hazard; BS 5852 Ignition Source 5; BS 7176 Medium Hazard; NF D 60-013; ÖNORM A 3800-1 (over CMHR 58kg/m³ foam); UNI 9175 Classe 1 IM)

Ecologie: Kleurstoffen die geen zware metalen bevatten, na certificaat EU Ecolabel, OEKO-TEX® Standard 100, gemaakt van 100% gerecycled Polyester

Stoffen en leer als grondstoffen zeer verschillend in kleur en structuur. Daardoor is bij inkleuring van leer en stof uit verschillende partijen, niet altijd een exacte overeenstemming van de kleuren gewaarborgd. Deze geringe kleurafwijkingen bij naleveringen zijn onontkoombaar en rechtvaardigen geen reclames.

CHICAGO (Camira Urban) Price group 4

Material: 100% post-consumer recycled polyester
Fabric weight/lm: 340 g +/- 5%
Width: 140 cm
Abrasion resistance: ≥ 100.000 Martindale
Light fastness: 6 (ISO 105 - B02)
Pilling: 5, no pilling
Colour fastness to rubbing wet/dry: 4/4 (ISO 105 - X12)

Fire Resistance Standards: flame retardant¹ (DIN 4102:B1; BS EN 1021 - part 1&2; BS 7176 Low Hazard; BS 5852 Ignition Source 5; BS 7176 Medium Hazard; NF D 60-013; ÖNORM A 3800-1 (over CMHR 58kg/m³ foam); UNI 9175 Classe 1 IM)

Ecology: Non metallic dyestuffs, certified to EU Ecolabel, OEKO-TEX® Standard 100, made of 100% recycled Polyester

Due to the natural variations in the colour and structure of the raw materials it is impossible, when dyeing fabrics and leather from different production lots, to guarantee that the final shades will match perfectly in every case. Minor discrepancies in the colour of goods supplied as subsequent or supplementary items cannot therefore be regarded as justification for any claim to replacement.

CHICAGO (Camira Urban) Groupe de prix 4

Composition : 100% polyester recyclé post consommation
Poids du tissu/ml : 340 g +/- 5%
Largeur : 140 cm
Nombre de tours d'abrasion : ≥ 100.000 Martindale
Tenue à la lumière : 6 (ISO 105 - B02)
Boulochage : 5, ne bouloche pas
Résistance au frottement à humide/sec.: 4/4 (ISO 105 - X12)

Normes anti-feu : difficilement inflammable¹ (DIN 4102:B1; BS EN 1021 - part 1&2; BS 7176 Low Hazard; BS 5852 Ignition Source 5; BS 7176 Medium Hazard; NF D 60-013; ÖNORM A 3800-1 (avec CMHR 58kg/m³ mousse); UNI 9175 Classe 1 IM)

Ecologie : Teintures non métalliques; certifié à EU Ecolabel, OEKO-TEX® Standard 100, fait de 100% Polyester recyclé

Le cuir et les tissus sont en tant que matériaux de base différents en couleur et structure. C'est pourquoi il n'est pas toujours possible d'obtenir une totale similitude des tons lors de la teinture du cuir ou du tissu dans les différents départements de fabrication. Ces légères différences de teinte ne justifieront pas un remplacement.

CHICAGO

prijsgroep 4

Photographic fabric scans are not colour accurate. Always request actual fabric samples before ordering.



Freeway YN211 0486



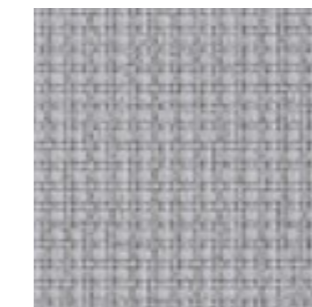
Cosmopolitan YN203 0485



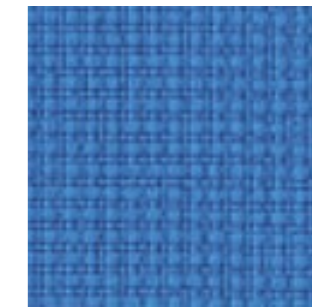
Bench YN091 0480



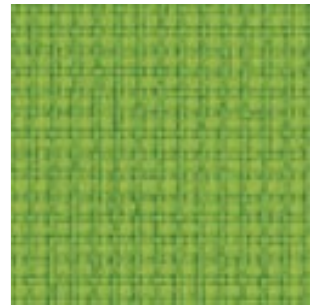
Living YN108 0478



Sidewalk YN094 0476



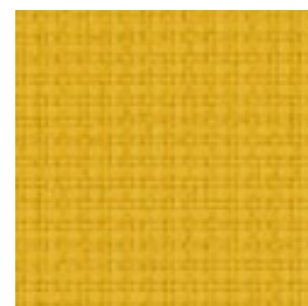
Penthouse YN202 0469



Uptown YN200 0465



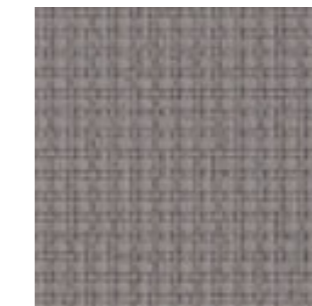
Graffiti YN204 0487



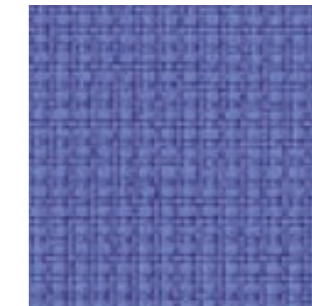
Avenue YN148 0461



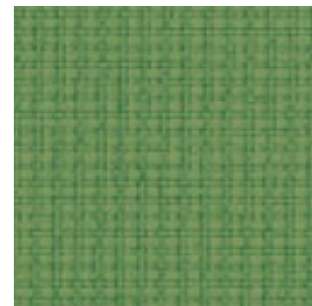
District YN212 0483



Curb YN206 0467



Ringroad YN208 0471



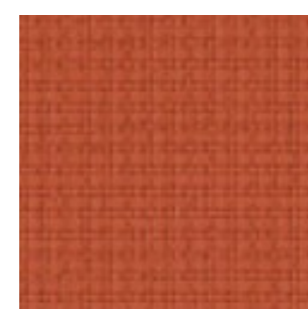
Suburbia YN159 0468



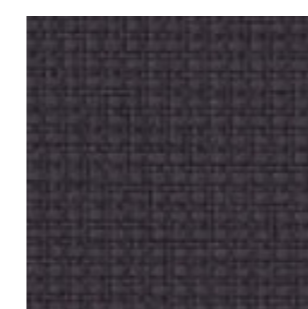
Intersection YN205 0489



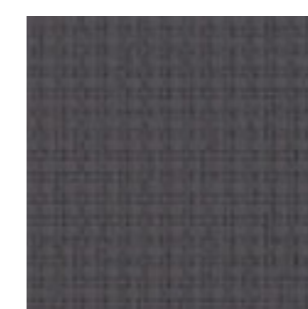
Congestion YN079 0462



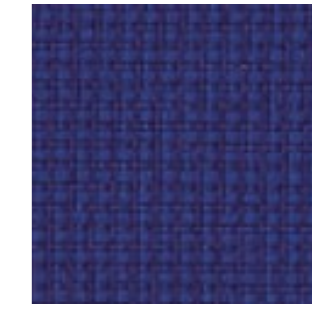
Highrise YN076 0464



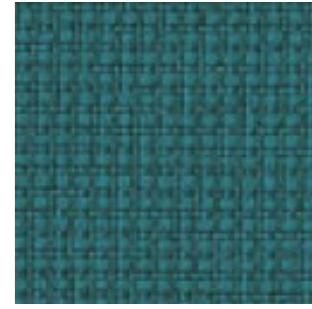
Underground YN145 0479



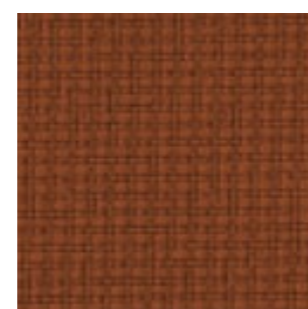
Square YN207 0474



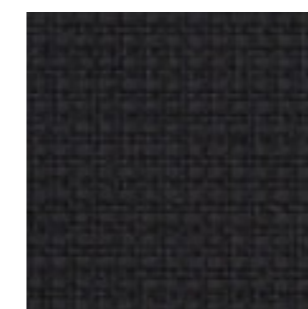
Conurbation YN082 0470



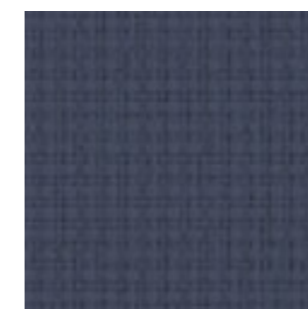
Boulevard YN160 0477



Precinct YN027 0466



Subway YN009 0484



Junction YN083 0473



Nightowl YN210 0472



Streetsmart YN209 0475