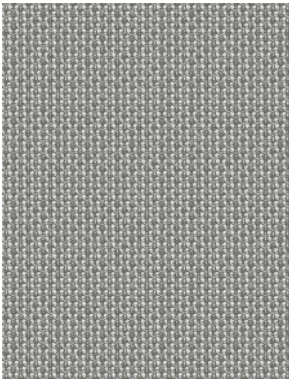
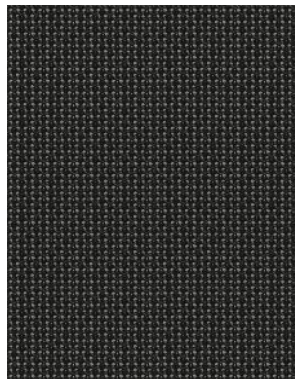


MESH CARD

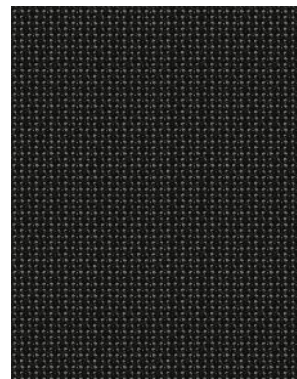
Technical data	Mera / Connex2	Duera / Cato Plus	Orbit Network
Material:	100% polyester	100% polyester	100% Trevira CS
Fabric weight/m ² :	300 g	505 g	405 g
Abrasion resistance:	50.000 (DIN EN ISO 12947-2, Martindale)	50.000 (DIN EN ISO 12947-2, Martindale)	70.000 (DIN EN ISO 12947-2, Martindale)
Light fastness:	5, (DIN EN ISO 105-B02)	5 (DIN EN ISO 105-B02)	5-8 (DIN EN ISO 105-B02)
Pilling:	5, no pilling	5, no pilling	4-5 (DIN EN ISO 12945-2)
Colourfastness to rubbing wet/dry:	4-5/4-5 (DIN EN ISO 105-X12)	4/4 (DIN EN ISO 105-X12)	4-5/4-5 (DIN EN ISO 105-X12)
Environmental certificate:		OEKO-TEX® STANDARD 100	OEKO-TEX® STANDARD 100 EU Ecolabel
FireResistance Standards:			NFP 92-503/504/505 M1, DIN 4102-B1, Class Uno UNI 8456 UNI 9174, BS EN 1021-1 Cigarette, BS EN 1021 1&2 Cigarette and Match, BS 5852 Crib 5, CA TB 117-2013



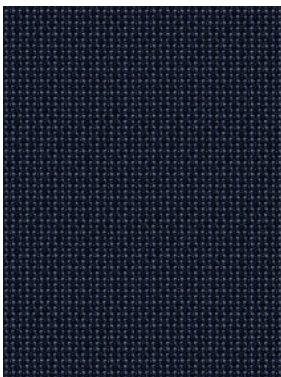
Mera / Connex2 2003 white-gray



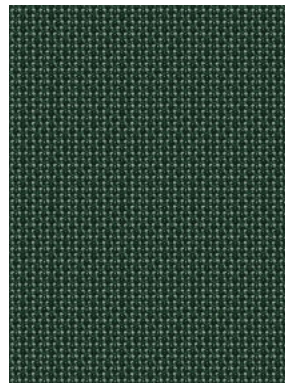
Mera / Connex2 2017 anthracite



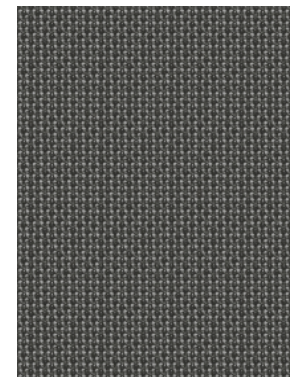
Mera / Connex2 2080 black



Mera / Connex2 2020 sapphire



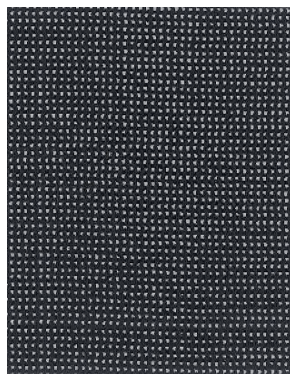
Mera / Connex2 2019 emerald



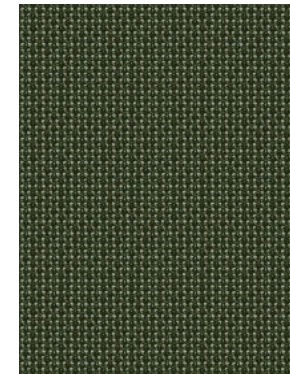
Mera / Connex2 2018 stone



Duera / Cato Plus 2080 black



Orbit Network 2080 black



Mera / Connex2 2021 olive