

FABRICS

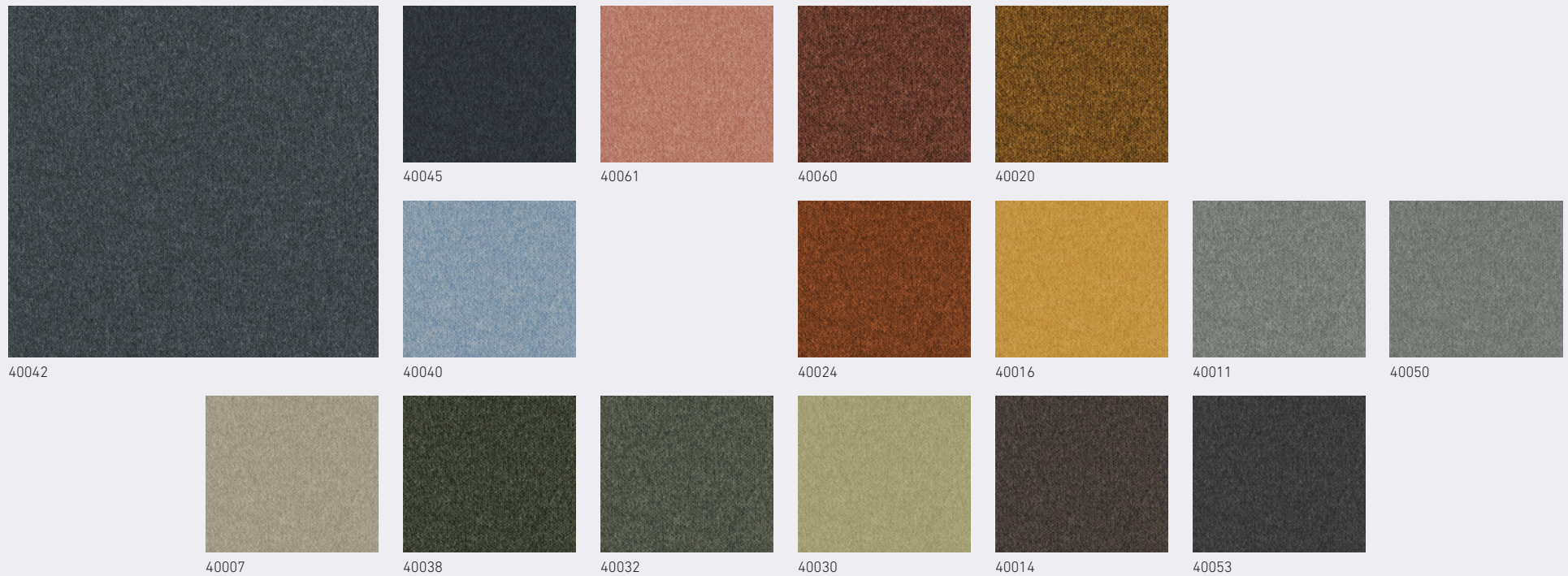
CAPSULE



casala

NEVADA

FABRIC BAND 3



SPECIFICATIONS

UK MATERIAL

100% POLYESTER

WEIGHT / WIDTH

APPROX. 488 G/M² / APPROX. 140 CM

ABRASION RESISTANCE

50.000 MARTINDALE (ISO 12947/2)

FLAME RETARDENCY

BS5852 SOURCE 0-1* (*FR FOAM)
EN 1021/1-2 / CAL TB 117 / NFPA 260
BS 7176 LOW HAZARD / UNI 9175 CLASE 11M
IMO ANNEX 1 PART / NF D 60 013
NF P92-507-M1 / DIN 4102 B2

FASTNESS TO LIGHT

6-7 (EN ISO 105-B02)

FASTNESS TO RUBBING

DRY: 5 / WET: 4-5 (ISO 105-X12)

PILLING

4-5 (ISO 12945-2)

NL MATERIAAL

100% POLYESTER

GEWICHT / BREEDTE

CA. 488 G/M² / CA. 140 CM

SLIJTWEERSTAND

50.000 MARTINDALE (ISO 12947/2)

BRANDVEILIGHEID

BS5852 SOURCE 0-1* (*FR FOAM)
EN 1021/1-2 / CAL TB 117 / NFPA 260
BS 7176 LOW HAZARD / UNI 9175 CLASE 11M
IMO ANNEX 1 PART / NF D 60 013
NF P92-507-M1 / DIN 4102 B2

LICHTECHTHEID

6-7 (EN ISO 105-B02)

WRIJFECHTHEID

DRY: 5 / WET: 4-5 (ISO 105-X12)

PILLING

4-5 (ISO 12945-2)

DE MATERIAL

100% POLYESTER

GEWICHT / BREITE

CA. 488 G/M² / CA. 140 CM

SCHEUERFESTIGKEIT

50.000 MARTINDALE (ISO 12947/2)

BRANDVERHALTEN

BS5852 SOURCE 0-1* (*FR FOAM)
EN 1021/1-2 / CAL TB 117 / NFPA 260
BS 7176 LOW HAZARD / UNI 9175 CLASE 11M
IMO ANNEX 1 PART / NF D 60 013
NF P92-507-M1 / DIN 4102 B2

LICHTECHTHEIT

6-7 (EN ISO 105-B02)

REIBECHTHEID

DRY: 5 / WET: 4-5 (ISO 105-X12)

PILLING

4-5 (ISO 12945-2)

FR MATÉRIAU

100% POLYESTER

POIDS / LARGEUR

CA. 488 G/M² / CA. 140 CM

SOLIDITÉ À LA LUMIÈRE

50.000 MARTINDALE (ISO 12947/2)

NON FEU

BS5852 SOURCE 0-1* (*FR FOAM)
EN 1021/1-2 / CAL TB 117 / NFPA 260
BS 7176 LOW HAZARD / UNI 9175 CLASE 11M
IMO ANNEX 1 PART / NF D 60 013
NF P92-507-M1 / DIN 4102 B2

SOLIDITÉ LUMIÈRE

6-7 (EN ISO 105-B02)

RÉSISTANCE AU FROTTEMENT

DRY: 5 / WET: 4-5 (ISO 105-X12)

PILLING

4-5 (ISO 12945-2)

SAMPLE SERVICE

The colours in this publication may differ to the original product. We recommend requesting a product sample.

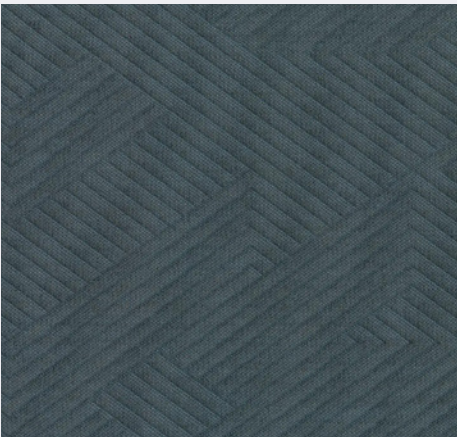
Sample service and further information:
www.casala.com/samples



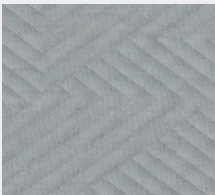
5 YEAR GUARANTEE



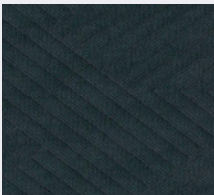
MIZMAZE



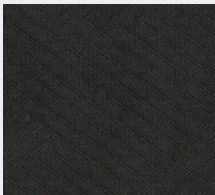
0762



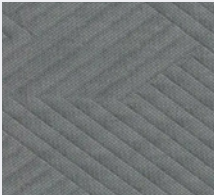
0712



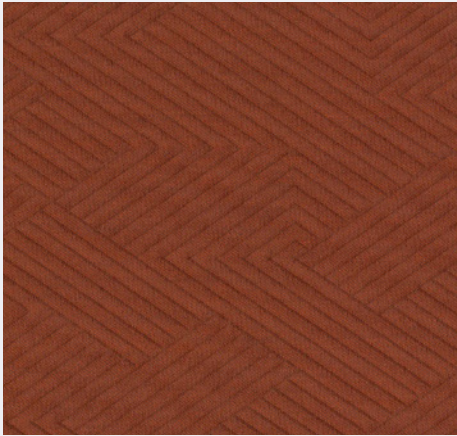
0882



0392



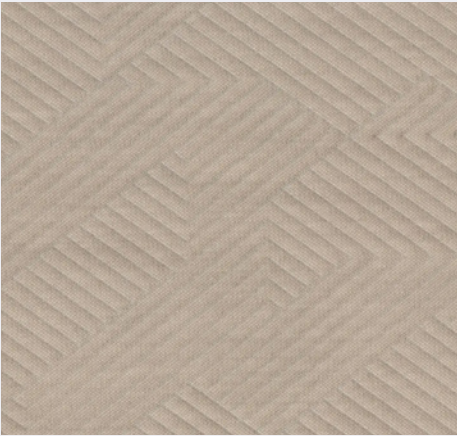
0122



0562



0252



0212



0342



0682



0962

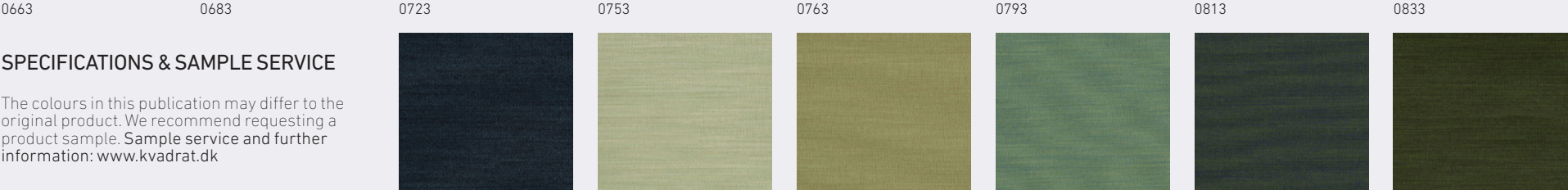
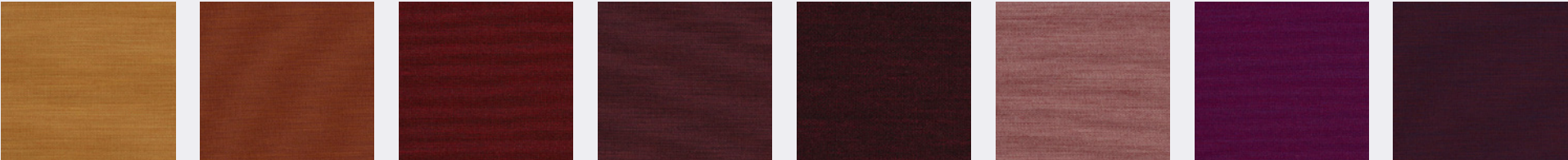
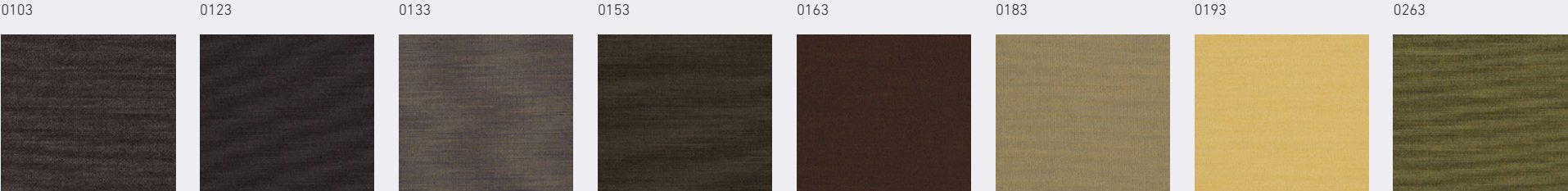


0322

SPECIFICATIONS & SAMPLE SERVICE

The colours in this publication may differ to the original product.
We recommend requesting a product sample.
Sample service and further information: www.kvadrat.dk

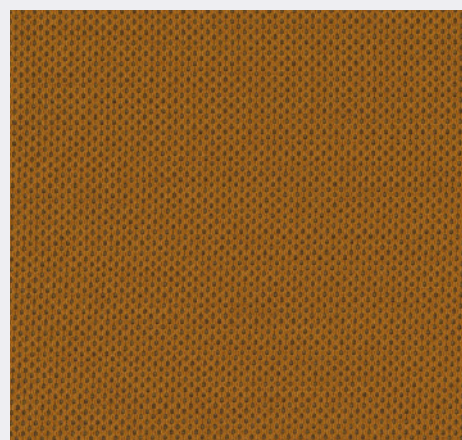
UNIFORM MELANGE



SPECIFICATIONS & SAMPLE SERVICE

The colours in this publication may differ to the original product. We recommend requesting a product sample. Sample service and further information: www.kvadrat.dk

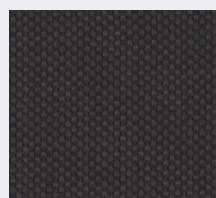
PLECTO



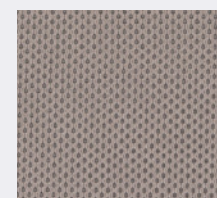
0444



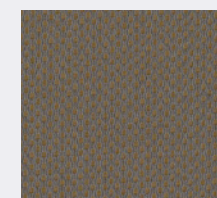
0134



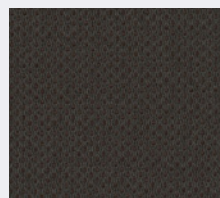
0184



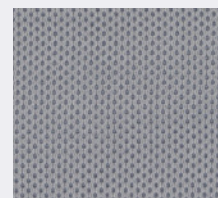
0224



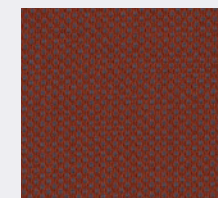
0244



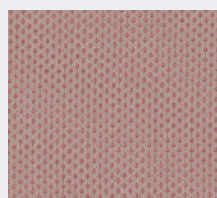
0284



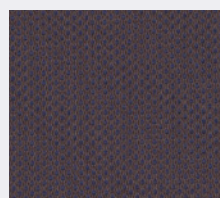
0114



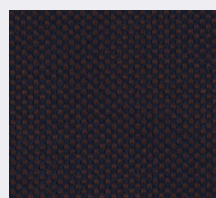
0564



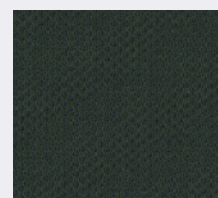
0624



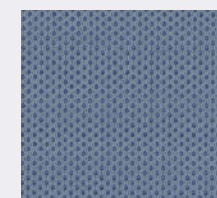
0654



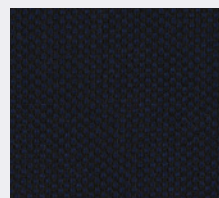
0784



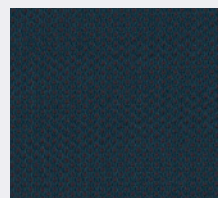
0984



0734



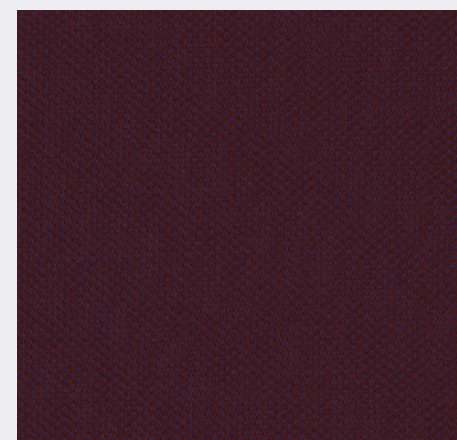
0794



0874



0934



0684

SPECIFICATIONS & SAMPLE SERVICE

The colours in this publication may differ to the original product.
We recommend requesting a product sample.
Sample service and further information: www.kvadrat.dk

PLANUM



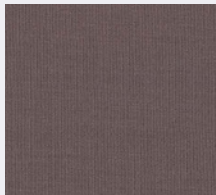
0111



0141



0201



0241



0271



0751



0681



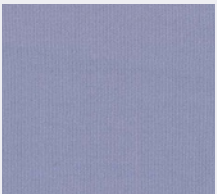
0571



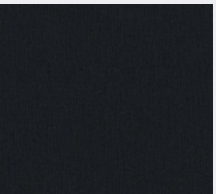
0351



0741



0711



0791



0551



0521



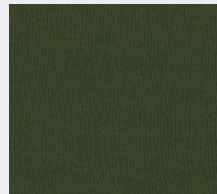
0441



0921



0941



0961



0971

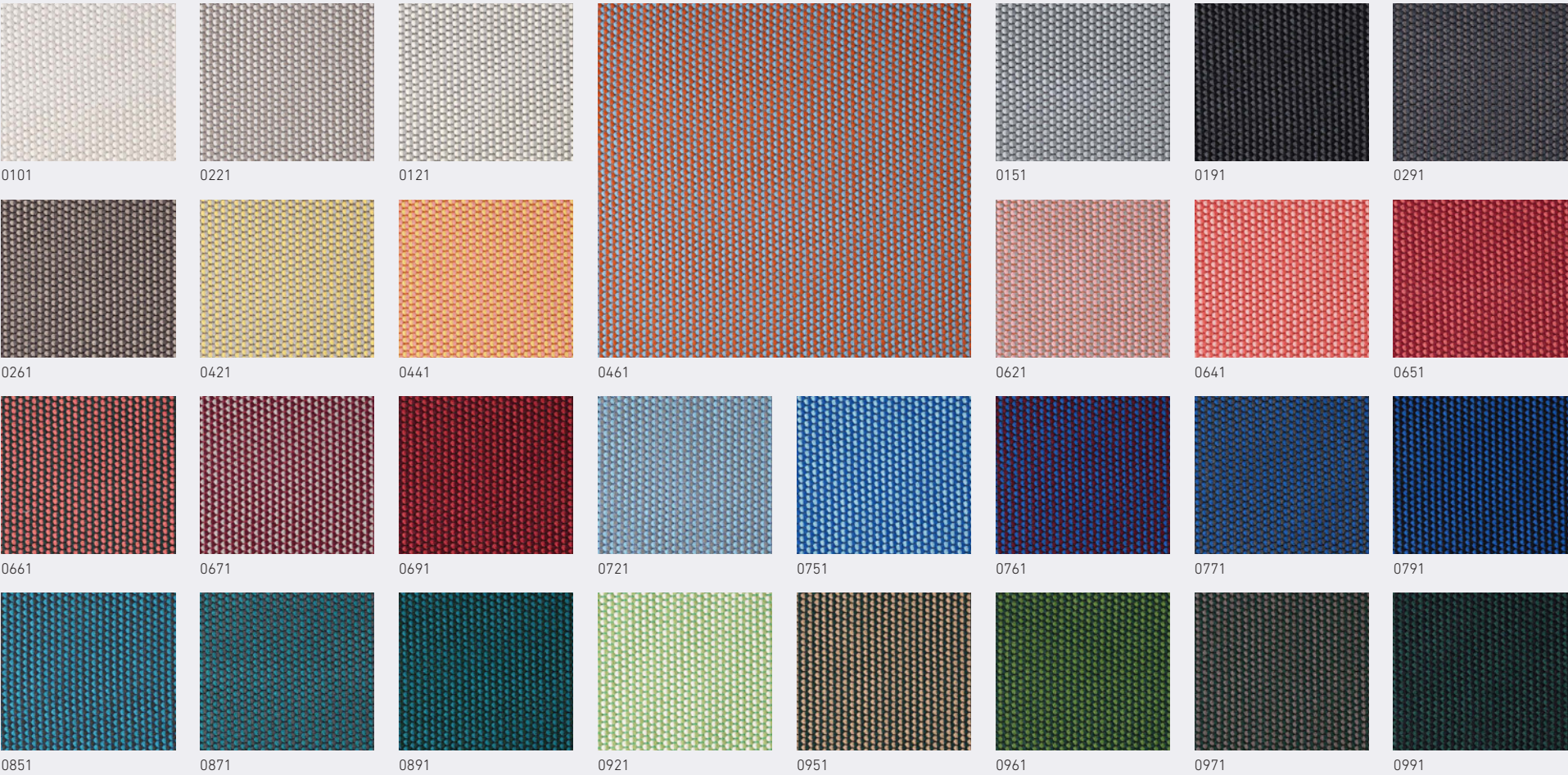


0411

SPECIFICATIONS & SAMPLE SERVICE

The colours in this publication may differ to the original product.
We recommend requesting a product sample.
Sample service and further information: www.kvadrat.dk

DROP



SPECIFICATIONS & SAMPLE SERVICE

The colours in this publication may differ to the original product.
We recommend requesting a product sample.
Sample service and further information: www.kvadrat.dk

casala

www.casala.com