

FINISH SELECTION 2024

HOWE

THOUGHTFULLY CURATED CHOICES



40/4
Seats / backs
Natural wood
veneers



V1 - maple



V2 - beech



V3 - oak



V5 - cherry



V12 - ash
EMEA ONLY



V13 - birch
EMEA ONLY



V15 - walnut

40/4
Seats / backs
Stains



LW17 - black



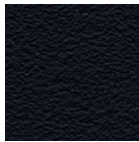
LW30 - white



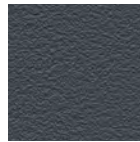
Any RAL

All RAL colours available
based upon customer sample

40/4
Seats / backs
Polyamide



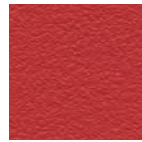
PA200 - black



PA100 - Howe grey



PA300 - coconut



PA110 - Ayers Rock red



PA260 - marine blue



PA360 - olive green



PA320 - mandarin



PA250 - blue eyes



PA370 - mint turquoise



PA380 - aubergine

40/4
Seats / backs
Metal



ME200 - black



ME300 - white



ME110 - red
EMEA ONLY



Any RAL

All RAL colours available
based upon customer sample

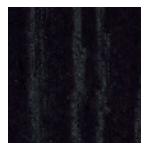
40/4
WOOD
FRAME
Seats / backs
Natural wood
veneers / stains



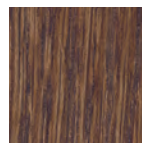
V2 - beech



V3 - oak

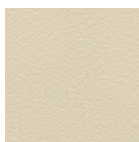


LW17 - black stain



LW25 - walnut stain

SixE
Shells
Polypropolyne



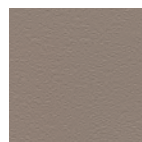
PP310 - wheat



PP270 - ocean



PP120 - red ochre



PP340 - fawn

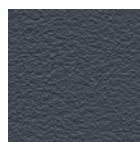


PP350 - lichen

PP300 CHALK, PP100 HOWE GREY,
PP200 BLACK AND PP120 RED
OCHRE SHELLS ALSO AVAILABLE
AS RECYCLED



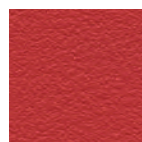
PP200 - black



PP100 - Howe grey



PP300 - chalk



PP110 - Ayers Rock red



PP250 - blue eyes



PP360 - olive green

CHAIRS

EMEA
NORTH AMERICA

MN1
Backs
Natural wood
veneers / stains



V3 - oak



LW17 - black stain

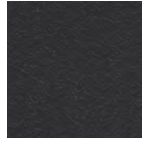


LW25 - walnut stain

40/4
SIXE
Frames
Steel



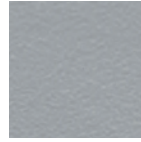
B1 - chrome



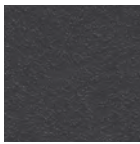
B6 - satin black



B7 - black



B9 - alu grey



B10 - Howe grey



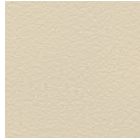
B30 - white



Any RAL

All RAL colours
available based
upon customer
sample

SIXE
ONLY



Wheat



Ocean



Red Ochre

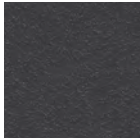


Fawn



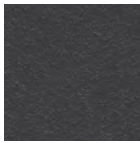
Lichen

SIXE SWIVEL
SIXE LEARN
Base
Polyamide



PA100 - Howe grey

SIXE SWIVEL
SIXE LEARN*
Swing arm*
Gas lift



B10 - Howe grey

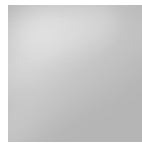
MN1
Bases



B1 - chrome
- Cantilever only

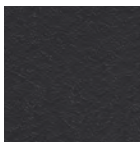


B7 - black



B51 - polished alu

AS100
Bases / seat
frames



B6 - satin black



B7 - black



B51 - polished alu



FABRICS

Enhance your designs with consciously chosen fabrics of top-notch performance and sustainable profiles. If you're seeking a solution that goes beyond standard options, please contact HOWE Customer Service.

40/4
MNI
SixE
AS100



62126

CURA by Gabriel

EMEA + US/CAN price group 1

Composition: 98% post-consumer recycled polyester, 2% polyester
Martindale: 100.000
Washable: 60-74°C
Cleanable: YES

Flammability CAL 117: YES
Added flame retardant: NO
Flammability M: NO
Crib 5: NO
Ecolabel: YES
Oeko-Tex: YES

[VIEW FULL COLOR RANGE](#)

40/4
MNI
SixE
AS100



64030

EVENT by Gabriel

EMEA + US/CAN price group 1

Composition: 100% polyester
Martindale: 100.000
Washable: 60°C
Cleanable: YES

Flammability CAL 117: YES
Added flame retardant: NO
Flammability M: NO
Crib 5: NO
Ecolabel: YES
Oeko-Tex: YES

[VIEW FULL COLOR RANGE](#)

40/4
MNI



61095

SixE
AS100
Needs testing

FIGHTER by Gabriel

EMEA + US/CAN price group 1

Composition: 100% recyclable polyester
Martindale: 130.000
Washable: YES
Cleanable: Only dry

Flammability CAL 117: YES
Added flame retardant: NO
Flammability M: NO
Crib 5: NO
Ecolabel: NO
Oeko-Tex: YES

[VIEW FULL COLOR RANGE](#)

40/4
MNI
SixE
AS100



Wedgwood - IF027

MAIN LINE PLUS by Camira

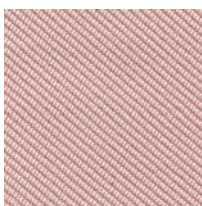
EMEA + US/CAN price group 1

Composition: 67% wool, 20% flame retardant viscose, 13% viscose
Martindale: ≥50,000
Washable: YES
Cleanable: YES

Flammability CAL 117: YES
Added flame retardant: YES
Flammability M: NO
Crib 5: YES
Ecolabel: NO
Oeko-Tex: YES

[VIEW FULL COLOR RANGE](#)

40/4
MNI
SixE



Seafarer - OOC16

OCEANIC by Camira

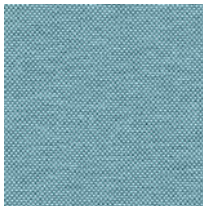
EMEA + US/CAN price group 1

Composition: 100% post-consumer recycled polyester
Martindale: ≥100,000
Washable: 60°C
Cleanable: YES

Flammability CAL 117: YES
Added flame retardant: NO
Flammability M: NO
Crib 5: NO
Ecolabel: YES
Oeko-Tex: YES

[VIEW FULL COLOR RANGE](#)

40/4
MN1
SixE



Tide - QUE12

QUEST by Camira

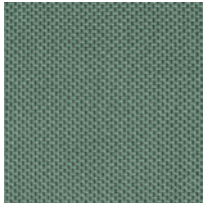
EMEA + US/CAN price group 1

Composition: 100% post-consumer recycled polyester
 Martindale: ≥100,000
 Washable: 60°C
 Cleanable: YES

Flammability CAL 117: YES
 Added flame retardant: NO
 Flammability M: NO
 Crib 5: NO
 Ecolabel: YES
 Oeko-Tex: YES

[VIEW FULL COLOR RANGE](#)

40/4
MN1
SixE
AS100



Joy - REP07

REPLAY by Camira

EMEA + US/CAN price group 1

Composition: 100% post-consumer recycled flame retardant polyester
 Martindale: ≥100,000
 Washable: 60°C
 Cleanable: YES

Flammability CAL 117: NO
 Added flame retardant: YES
 Flammability M: M1
 Crib 5: NO
 Ecolabel: YES
 Oeko-Tex: YES

[VIEW FULL COLOR RANGE](#)

40/4
MN1
SixE



Resin - EGL04

RIVET by Camira

EMEA + US/CAN price group 1

Composition: 100% post-consumer recycled polyester
 Martindale: ≥80,000
 Washable: 60°C
 Cleanable: YES

Flammability CAL 117: YES
 Added flame retardant: NO
 Flammability M: NO
 Crib 5: NO
 Ecolabel: YES
 Oeko-Tex: NO

[VIEW FULL COLOR RANGE](#)

40/4
MN1
SixE



66763

STEP by Gabriel

EMEA + US/CAN price group 1

Composition: 100% Trevira CS
 Martindale: 100.000
 Washable: 60-74°C
 Cleanable: YES

Flammability CAL 117: YES
 Added flame retardant: YES
 Flammability M: M1
 Crib 5: YES
 Ecolabel: YES
 Oeko-Tex: YES

[VIEW FULL COLOR RANGE](#)

40/4
MN1
SixE
AS100



63138

STEP MELANGE by Gabriel

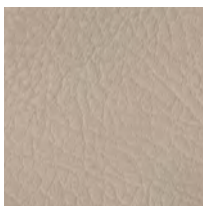
EMEA + US/CAN price group 1

Composition: 100% Trevira CS
 Martindale: 100.000
 Washable: 60-74°C
 Cleanable: YES

Flammability CAL 117: YES
 Added flame retardant: YES
 Flammability M: M1
 Crib 5: YES
 Ecolabel: YES
 Oeko-Tex: YES

[VIEW FULL COLOR RANGE](#)

40/4
MN1
SixE
AS100



Atacama - TAN-0004

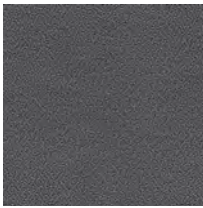





TANNERY by Spradling

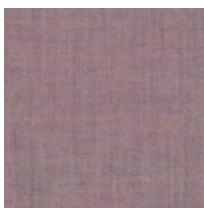
EMEA + US/CAN price group 1

Composition: Vinyl topcoat, cotton backing
 Martindale: >100.000
 Washable: NO
 Cleanable: YES

Flammability CAL 117: YES
 Added flame retardant: YES
 Flammability M: M2
 Crib 5: NO
 Ecolabel: NO
 Oeko-Tex: NO

[VIEW FULL COLOR RANGE](#)

<p>40/4 MNI SixE</p>	 <p>Blizzard - YS081</p>	<p>XTREME by Camira</p> <hr/> <p>Composition: 100% post-consumer recycled flame retardant polyester</p> <p>Martindale: ≥100,000</p> <p>Washable: 60°C</p> <p>Cleanable: YES</p>	<p>Flammability CAL 117: YES</p> <p>Added flame retardant: YES</p> <p>Flammability M: NO</p> <p>Crib 5: YES</p> <p>Ecolabel: YES</p> <p>Oeko-Tex: YES</p>	<p>EMEA + US/CAN price group 1</p> <hr/> <p style="text-align: center; background-color: #d9d9d9; padding: 2px;">VIEW FULL COLOR RANGE</p>
<p>40/4 MNI SixE AS100</p>	 <p>Tooting - MLF7</p>	<p>MAIN LINE FLAX by Camira</p> <hr/> <p>Composition: 70% virgin wool, 30% flax</p> <p>Martindale: ≥50,000</p> <p>Washable: NO</p> <p>Cleanable: YES</p>	<p>Flammability CAL 117: YES</p> <p>Added flame retardant: NO</p> <p>Flammability M: NO</p> <p>Crib 5: YES</p> <p>Ecolabel: YES</p> <p>Oeko-Tex: NO</p>	<p>EMEA + US/CAN price group 2</p> <hr/> <p style="text-align: center; background-color: #d9d9d9; padding: 2px;">VIEW FULL COLOR RANGE</p>
<p>40/4 MNI SixE</p>	 <p>Warrior - 466553-045</p>	<p>METAPHOR by Maharam</p> <hr/> <p>Composition: 100% polyester</p> <p>Martindale: 100,000 double rubs Wyzenbeek</p> <p>Washable: NO</p> <p>Cleanable: YES</p>	<p>Flammability CAL 117: YES</p> <p>Added flame retardant: NO</p> <p>Flammability M: NO</p> <p>Crib 5: NO</p> <p>Ecolabel: NO</p> <p>Oeko-Tex: NO</p>	<p>EMEA + US/CAN price group 2</p> <hr/> <p style="text-align: center; background-color: #d9d9d9; padding: 2px;">VIEW FULL COLOR RANGE</p>
<p>40/4 MNI</p>	 <p>Skylight</p>	<p>VALENCIA B1 by Spradling</p> <hr/> <p>Composition: Vinyl topcoat, cotton backing</p> <p>Martindale: >300.000</p> <p>Washable: NO</p> <p>Cleanable: YES</p>	<p>Flammability CAL 117: YES</p> <p>Added flame retardant: YES</p> <p>Flammability M: M1</p> <p>Crib 5: YES</p> <p>Ecolabel: NO</p> <p>Oeko-Tex: NO</p>	<p>EMEA + US/CAN price group 2</p> <hr/> <p style="text-align: center; background-color: #d9d9d9; padding: 2px;">VIEW FULL COLOR RANGE</p>
<p>40/4 MNI SixE AS100</p>	 <p>04031</p>	<p>CRISP by Gabriel</p> <hr/> <p>Composition: 93% wool, 7% polyamide</p> <p>Martindale: 200 000</p> <p>Washable: NO</p> <p>Cleanable: YES</p>	<p>Flammability CAL 117: YES</p> <p>Added flame retardant: NO</p> <p>Flammability M: M1</p> <p>Crib 5: NO</p> <p>Ecolabel: YES</p> <p>Oeko-Tex: YES</p>	<p>EMEA + US/CAN price group 3</p> <hr/> <p style="text-align: center; background-color: #d9d9d9; padding: 2px;">VIEW FULL COLOR RANGE</p>
<p>40/4 MNI SixE AS100</p>	 <p>64119</p>	<p>FAME by Gabriel</p> <hr/> <p>Composition: 95% wool, 5% polyamide</p> <p>Martindale: 200 000</p> <p>Washable: NO</p> <p>Cleanable: Only dry</p>	<p>Flammability CAL 117: YES</p> <p>Added flame retardant: NO</p> <p>Flammability M: NO</p> <p>Crib 5: YES</p> <p>Ecolabel: YES</p> <p>Oeko-Tex: YES</p>	<p>EMEA + US/CAN price group 3</p> <hr/> <p style="text-align: center; background-color: #d9d9d9; padding: 2px;">VIEW FULL COLOR RANGE</p>

40/4
MNI
SixE
AS100

0682

REMIX 3 by Kvadrat

EMEA + US/CAN price group 3

Composition: 90% new wool, 10% nylon
 Martindale: 100,000
 Washable: NO
 Cleanable: Only dry

Flammability CAL 117: YES
 Added flame retardant: NO
 Flammability M: NO
 Crib 5: NO
 Ecolabel: YES
 Oeko-Tex: NO

[VIEW FULL COLOR RANGE](#)
40/4
MNI
AS100

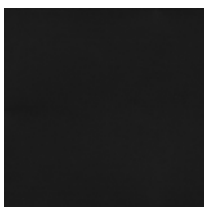
0926

CANVAS 2 by Kvadrat

EMEA + US/CAN price group 4

Composition: 90% new wool, 10% nylon
 Martindale: 100,000
 Washable: NO
 Cleanable: Only dry

Flammability CAL 117: YES
 Added flame retardant: NO
 Flammability M: NO
 Crib 5: NO
 Ecolabel: YES
 Oeko-Tex: NO

[VIEW FULL COLOR RANGE](#)
40/4
MNI
AS100

Black - 41599

ULTRA by Sørensen Leather

EMEA + US/CAN price group 4

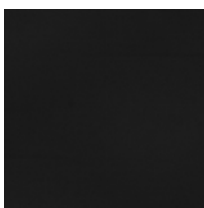
(TANGO), BLACK

Composition: Protected
 Martindale: -
 Washable: -
 Cleanable: -

Flammability CAL 117: YES
 Added flame retardant: NO
 Flammability M: -
 Crib 5: -
 Ecolabel: -
 Oeko-Tex: -

[BLACK ONLY](#)

AS100



Black - 42438

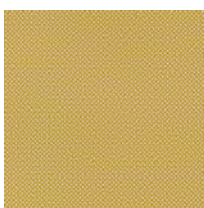
BASIC by Sørensen Leather

EMEA + US/CAN price group 5

(KNIGHT), BLACK

Composition: Protected
 Martindale: -
 Washable: -
 Cleanable: -

Flammability CAL 117: YES
 Added flame retardant: NO
 Flammability M: -
 Crib 5: -
 Ecolabel: -
 Oeko-Tex: YES

[BLACK ONLY](#)
40/4
MNI
Needs
testing40/4
MNI
SixE
AS100

0407

HALLINGDAL 65 by Kvadrat

EMEA + US/CAN price group 5

Composition: 70% new wool,
30% viscose
 Martindale: 100.000
 Washable: NO
 Cleanable: Only dry

Flammability CAL 117: YES
 Added flame retardant: NO
 Flammability M: NO
 Crib 5: YES
 Ecolabel: YES
 Oeko-Tex: NO

[VIEW FULL COLOR RANGE](#)
40/4
MNI
SixE
AS100

0865

STEELCUT TRIO 3 by Kvadrat

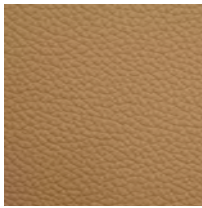
EMEA + US/CAN price group 5

Composition: 90% new wool, 10% nylon
 Martindale: 100.000
 Washable: NO
 Cleanable: Only dry

Flammability CAL 117: YES
 Added flame retardant: NO
 Flammability M: NO
 Crib 5: NO
 Ecolabel: YES
 Oeko-Tex: NO

[VIEW FULL COLOR RANGE](#)

40/4
MNI
AS100



5050

PANAMA by Dani Leather

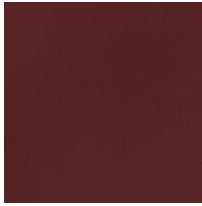
EMEA + US/CAN price group LPCL

Composition: Protected
Martindale: -
Washable: -
Cleanable: -

Flammability CAL 117: -
Added flame retardant: -
Flammability M: -
Crib 5: -
Ecolabel: -
Oeko-Tex: -

[VIEW FULL COLOR RANGE](#)

40/4
MNI
AS100



Burgundy - 30317

SAVANNE by Sørensens Leather

EMEA + US/CAN price group LSL

Composition: Semi-aniline
Martindale: -
Washable: -
Cleanable: -

Flammability CAL 117: -
Added flame retardant: -
Flammability M: -
Crib 5: -
Ecolabel: -
Oeko-Tex: YES

[VIEW FULL COLOR RANGE](#)

40/4
MNI
AS100



Altweiss - 41576

ULTRA by Sørensens Leather

EMEA + US/CAN price group LUCL

(TANGO), COLOURED

Composition: Protected
Martindale: -
Washable: -
Cleanable: -

Flammability CAL 117: -
Added flame retardant: -
Flammability M: -
Crib 5: -
Ecolabel: -
Oeko-Tex: -

[VIEW FULL COLOR RANGE](#)





AS TABLES
FOLDING SURFACES
MOVEO
SIMPLA
TEMPEST

Tops
Natural wood
veneers / Stains



V1 - maple



V2 - beech



V3 - oak



V5 - cherry



V12 - ash



V13 - birch



V15 - walnut

AS tables standard:
V2 beech, V3 oak ONLY

Folding Surfaces standard:
V3 oak ONLY



LW17 - black stain



LW25 - walnut stain



LW30 - white stain



Any RAL

All RAL colours available
based upon customer sample

AS TABLES
MOVEO
SIMPLA
TEMPEST

Tops
Wood grain
laminates



L42 - beech



L43 - oak



L55 - walnut



L50 - grey oak

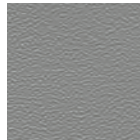
AS tables standard:
L42 beech, L43 oak ONLY

AS TABLES
FOLDING SURFACES
MOVEO
SIMPLA
TEMPEST
USU

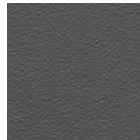
Tops
Coloured
laminates



L310 - white



L420 - grey



L110 - Howe grey

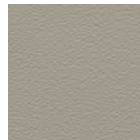


L210 - black

Folding Surfaces standard:
L310 white, L210 black ONLY



L500 - metal slate



L600 - stone grey



Any coloured
laminates*

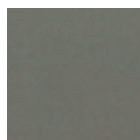
*Any coloured laminates
does not apply to Usu and
Folding Surfaces

AS TABLES
MOVEO
SIMPLA
TEMPEST

Tops
Coloured
nano laminates



NL350 - eggshell white



NL450 - warm grey



NL200 - black



TABLES

EMEA



FOLDING SURFACES
MOVEO
SIMPLA
TEMPEST
USU
Tops
Melamines

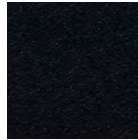


M310 - white

TUTOR
Tops
Bendable
compact
laminates



F300 - white

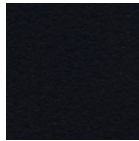


F200 - black



Any bendable
compact laminate

AS TABLES
MOVEO
SIMPLA
TEMPEST
Tops
Linoleums



FL200 - black

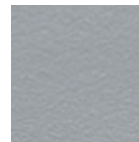
SIMPLA
TUTOR
Bases
Steel



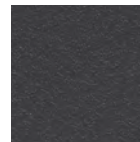
B1 - chrome



B7 - black



B9 - alu grey



B10 - Howe grey

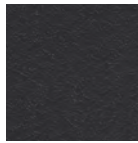


B30 - white

TEMPEST
Bases
Steel



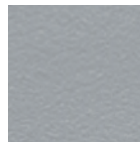
B1 - chrome



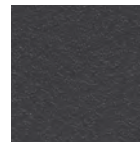
B6 - satin black



B7 - black



B9 - alu grey



B10 - Howe grey



B30 - white

USU
Bases
Steel

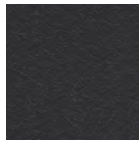


B1 - chrome

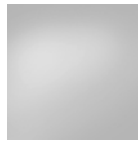


B7 - black

MOVEO
Bases
Aluminum



B6 - satin black

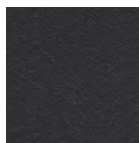


B51 - polished alu
- feet only



B52 - anodized alu
- columns only

AS TABLES
Bases



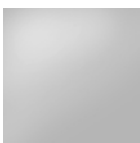
B6 - satin black



B7 - black

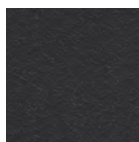


B31 satin white
- columns only



B51 - polished alu
- bases only

FOLDING SURFACES
Bases



B6 - satin black

AS TABLES
MOVEO
SIMPLA
TEMPEST

Tops
Natural wood
veneers / stains



VU1 - maple



VU3 - oak



VU5 - cherry



VU15 - walnut

AS tables standard:
VU1 maple, VU3 oak ONLY



LW17 - black stain



LW25 - walnut stain



LW30 - white stain



Any RAL

All RAL colors available
based upon customer sample

FOLDING SURFACES

Tops
Natural wood
veneers / stains



V3 - oak

AS TABLES
MOVEO
SIMPLA
TEMPEST

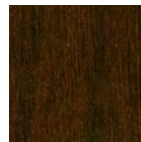
Tops
Wood grain
laminates



LU31 - maple



LU35 - cherry



LU45 - walnut

AS tables standard:
LU31 maple ONLY

AS TABLES
FOLDING SURFACES
MOVEO
SIMPLA
TEMPEST
USU

Tops
Coloured
laminates



LU300 - white



LU400 - grey



LU200 - black



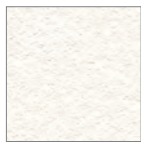
Any FORMICA /
WILSONART
colored laminates

Folding Surfaces standard:
LU300 white, LU200 black ONLY

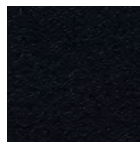
*Any FORMICA / WILSONART
colored laminates does not apply
to Usu and Folding Surfaces

TUTOR

Tops
Bendable
compact
laminates



F300 - white



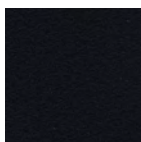
F200 - black



Any bendable
compact laminate

AS TABLES

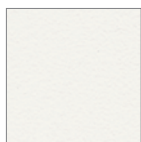
Tops
Linoleums



FL200 - black

FOLDING SURFACES

Tops
Melamines

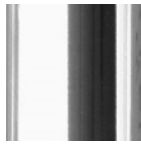


M310 - white



SIMPLA
TUTOR

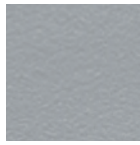
Bases
Steel



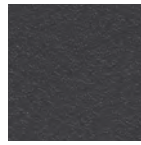
B1 - chrome



B7 - black



B9 - alu grey



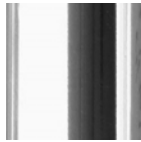
B10 - Howe grey



B30 - white

TEMPEST

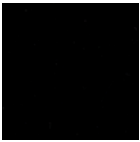
Bases
Steel



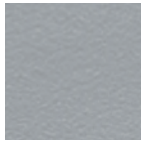
B1 - chrome



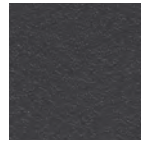
B6 - satin black



B7 - black



B9 - alu grey



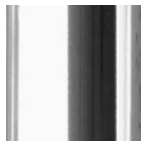
B10 - Howe grey



B30 - white

USU

Bases
Steel



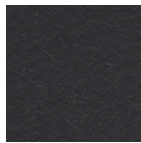
B1 - chrome



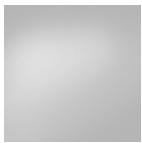
B7 - black

MOVEO

Bases
Aluminum



B6 - satin black



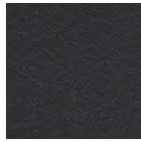
B51 - polished alu
- feet only



B52 - anodized alu
- columns only

AS TABLES

Bases



B6 - satin black



B7 - black



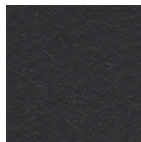
B31 satin white
- columns only



B51 - polished alu
- bases only

FOLDING SURFACES

Bases



B6 - satin black



TABLES
NORTH AMERICA



COLOUR REFERENCE ONLY
Variations in colours and structures may occur
Subject to ongoing changes and adjustments