

# Stoffen



# Stoffen

## Facet

									
Ashgrey 40	Natural 01	Beige 1037	Kiezel 7	Dolphin 180	Grey 65	Shitake 124	Taupe 1008	Antracite 67	Zwart 1003
									
Lightgrey 1000	Middengrijs 1001	Azure 144	Aqua 143	Olive 53	Army 14	Mint 50	Pistachio 52	Yellow 24	Maize 22
									
Light blue 41	Ocean blue 147	Petrol 56	Blue 45	Navy 1007	Nightshade 178	Indigo 90	Violet 72	Aubergine 74	Purple 78
									
Rust 29	Terra 31	Orange 2012/b	Mandarin 129	Fire 139	Red 2011	Fuchsia 77	Prune 76	Pink 73	Blossom 166
									
Dark brown 18									

DUURZAAM

DESKUNDIG

BETROUWBAAR

# Stoffen Facet

## Facet - Article passport



Woolly fabric with a soft grip, made from recycled material.

Available from stock in a wide range of contemporary and commercial colours.

## Product characteristics

Productgroup	flatweave
Applications	sofa's, beds, chairs with fitted and loose fitting upholstery
Composition faceside	70%RWO 25%PA 5%ROF
Composition backside	n/a
Bonding / Coating	n/a
Statistic code	51113080
Dyeing method	yarn dyed
Available colours	41
Packaging	transparent plastic

## Durability specifications

Test	Test Specification	Executed by laboratory:	Unit	Testresult		Norm RAL GZ 430/4:2019-01		Norm DIN EN 14 465:2006-09
				DRY	WET	DGM	DGM+	
Abrasion Resistance - yarn breakage	DIN EN ISO 12947-1:2007-04, DIN EN ISO 12947-2:2017-03	CTL	cycles	>100.000		min. 12.000	min. 16.000	A
Pilling	DIN EN ISO 12945-2:2000-11, 2000 cycles	CTL	grade	3-4		min. 3-4	min. 4	C
Colour fastness to light	DIN EN ISO 105-BO2:2014-11, Process 3, exposure level 5							
	light colours	CTL	grade	5		min. 4	min. 5	B
	middle colours	CTL	grade	5		min. 4	min. 5	B
	dark colours	CTL	grade	5		min. 4	min. 5	B
Colour fastness to rubbing	DIN EN ISO 105-X12:2016-11							
	light colours	CTL	grade	5	5	dry: 4, wet: 3	dry: > 4, wet: 3-4	A/A
	middle colours	CTL	grade	5	4-5	dry: 4, wet: 3	dry: > 4, wet: 3-4	A/A
	dark colours	CTL	grade	3-4	4	dry: 4, wet: 3	dry: > 4, wet: 3-4	C/A
Ignitability (cigarette test)	B5 5852 part 1 (1979) from The Furniture and Furnishing (Fire) (Safety) regulations: 1988 No. 1324, Schedule 4 part 1 Ignition source 0: cigarette 	Centexbel		passed				
	DIN EN ISO 1021-2:2014, Source: smouldering cigarette	Centexbel		passed				
Ignitability (match test)	B5 5852 part 1 (1979) from The Furniture and Furnishing (Fire)(Safety) regulations: 1988 No. 1324, Schedule 5 part 1 Ignition source 1: match flame equivalent 	Centexbel		passed				
	DIN EN ISO 1021-1:2014, Source: match flame equivalent	Centexbel		passed				

## Processing specifications

Minimum workable width in centimeters	± 145							
Roll length in meters	± 40							
Material weight in grams per linear meter	± 600							
Test	Test Specification	Executed by laboratory:	Unit	Testresult		Norm RAL GZ 430/4:2019-01		Norm DIN EN 14 465:2006-09
				WARP	WEFT	DGM	DGM+	
Tensile strength	DIN EN ISO 13934-1:2013-08	CTL	Newton	455	348	min. 350	min. 400	A/A
Tear growth resistance	DIN EN ISO 13937-3:2000-06	CTL	Newton	40,5	35,2	min. 25	min. 30	A/A
Resistance to seam slippage	DIN EN ISO 13936-2:2004-07, Load 180 N	CTL	mm	2,7	2,7	max. 5	max. 4	A/A
Delamination	DIN 53530:1981-02	CTL	Newton	n/a	n/a	n/a	n/a	n/a
Chemical substances	REACH	Centexbel		passed				









## Cleaning specifications

Test	Test Specification	Executed by laboratory:	Unit	Testresult		Norm RAL GZ 430/4:2019-01		Norm DIN EN 14 465:2006-09
				WARP	WEFT	DGM	DGM+	
Dimensional change for washing 30 degrees celcius / air drying	DIN EN ISO 5077:2008-04, DIN EN ISO 6330:2013-02, DIN EN ISO 3759:2011-08	CTL	%	n/a	n/a	n/a	n/a	n/a



Stoffen

# Stoffen Board

									
Natural 01	Lightgrey 60	Zinc 167	Grey 65	Darkgrey 68	Liver 10	Steel 149	Graphite 66	Antracite 67	Onyx 169
									
Ecru 102	Clay 84	Beige 05	Taupe 12	Darkbrown 18	Brown 15	Chocolate 17	Espresso 123	Darkblue 48	Navy 49
									
Sesame 113	Yellow pastel 195	Mustard 06	Mango 26	Maize 22	Olive 53	Lime 57	Pistachio 52	Green 55	Fire 139
									
Red 35	Mandarin 129	Aubergine 74	Fuchsia 77	Purple 78	Winered 39	Blush 92	Magnolia 160	Pink pastel 197	Blossom 166
									
Mint 50	Ice blue 43	Sky 142	Lightblue 41	Petrol 56	Turquoise 44	Denim 153	Aqua 143	Emerald 184	

Item No. / Name	Board				Testresultaat
Samenstelling Composition Zusammensetzung	100% PES				
Slijtage weerstand (toeren Martindale) Abrasion resistance (Rubs Martindale) Scheuerfestigkeit (Touren Martindale)	32.000				EN ISO 12947 1&2
Pilling Pilling resistance Pillbildung	4				EN ISO 12945-2
Treksterkte Tensile (breaking strength) Höchstzugkraft	Ketting Warp Kette	1020 N	Inslag Weft Schuss	1612 N	EN ISO 13934-1
Naadsterkte Seam slippage Nahtschiebefestigkeit	Ketting Warp Kette	3,8 mm	Inslag Weft Schuss	3,2 mm	EN ISO 13936-2
Lichtechtheid Lightfastness Lichtechtheit	Lichte kleuren 4-5 Light colors 4-5 Helle farben 4-5	Midden kleuren 4-5 Middle colors 4-5 Mittlere farben 4-5	Donker kleuren 4 Dark colors 4 Dunkle farben 4		
Rollengte Piece length Rolllänge	40 mtr				
Minimaal verwerkbare breedte Minimum usable width Minimum zu verarbeiten Breite	138 cm				
Brandvertragend Flame resistance Flammhemmend	BS5852 (1979) cigarette test				
Doekgewicht Material Weight Stoffgewicht	399 g/lm				
Wrijftechtheid Fastness to Rubbing Reibechtheid	droog dry trocken	4	nat wet nass	3-4	EN ISO 105 X12

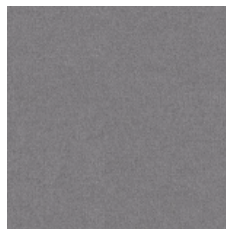


# Stoffen

## Jazz



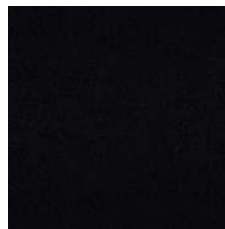
Ivory 101



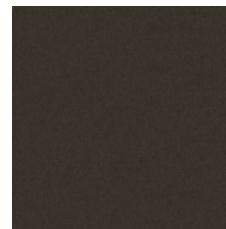
Lightgrey 60



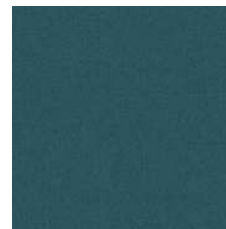
Antracite 67



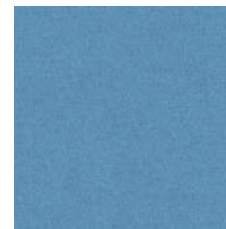
Onyx 169



Espresso 123



Petrol 56



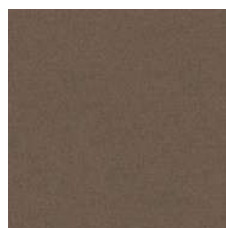
Aqua 143



Natural 01



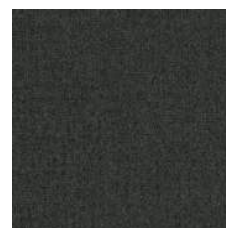
Beige 05



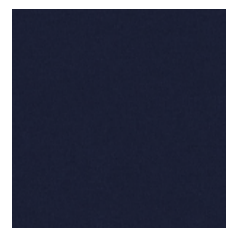
Capuccino 11



Darkbrown 18



Army 14



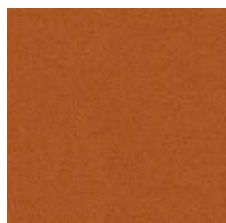
Navy 49



Purple 78



Lemon 122



Rust 29



Coral 95



Fuchsia 77



Indigo 90

DUURZAAM

DESKUNDIG

BETROUWBAAR

# Stoffen

## Jazz

Item No. / Name	Jazz				Test standard
Samenstelling Composition Zusammensetzung	100% Polyester				
Slijtage weerstand (toeren Martindale) Abrasion resistance (Rubs Martindale) Scheuerfestigkeit (Touren Martindale)	72.000				EN ISO 12947 1&2
Pilling Pilling resistance Pillbildung	4				EN ISO 12945-2
Treksterkte Tensile (breaking strength) Höchstzugkraft	Ketting Warp Kette	1380 N	Inslag Weft Schuss	625 N	EN ISO 13934-1
Naadsterkte Seam slippage Nahtschiebefestigkeit	Ketting Warp Kette	2,0 mm	Inslag Weft Schuss	2,0 mm	EN ISO 13936-2
Lichtechtheid Lightfastness Lichtechtheit	>5				EN ISO B02
Wrijfechtheid Fastness to Rubbing Reibechtheid	droog dry trocken	5	nat wet nat	5	EN ISO 105 - X12
Doekgewicht Material Weight Stoffgewicht	490 gr/m				
Rollengte Piece length Rollänge	50				
Minimaal verwerkbare breedte Minimum usable width Minimum zu verarbeiten Breite	138 cm				
Brandvertrangend Flame resistance Flammhemmend	PASS				BS 5852 (1979): the cigarette test





VOORTMANMEUBEL.NL

Showroom en productie in

Purmerend + 31 (0)88 004 87 00

verkoop@voortmanmeubel.nl

#### Kwaliteit en duurzaamheid

Voortman Kantoormeubelen BV is gecertificeerd volgens

de internationale kwaliteitsnorm NEN-EN-ISO 9001: 2015

en milieunorm NEN-EN-ISO 14001: 2015. Voor ons

duurzaamheidsbeleid hanteren wij NEN-ISO 26000: 2010



BETROUWBAAR DESKUNDIG DUURZAAM