

FINISH SELECTION 2025

HOWE

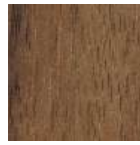
THOUGHTFULLY CURATED CHOICES



40/4
Seats / backs
Natural wood
veneers



V3 - oak



V15 - walnut

40/4
Seats / backs
Stains



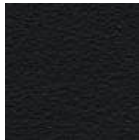
LW17 - black



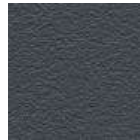
Any RAL

All RAL colours available
based upon customer sample

40/4
Seats / backs
Polyamide



PA200 - black



PA100 - Howe grey



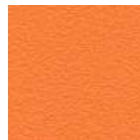
PA300 - coconut



PA110 - Ayers Rock red



PA360 - olive green



PA320 - mandarin



PA250 - blue eyes



PA260 - marine blue

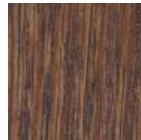
40/4
WOOD
FRAME
Seats / backs
Natural wood
veneers / stains



V3 - oak

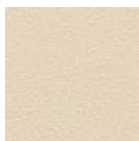


LW17 - black stain



LW25 - walnut stain

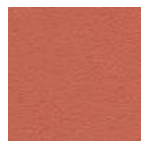
SixE
Shells
Polypropolyne



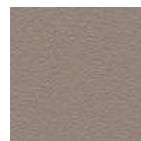
PP310 - wheat
VIRGIN



PP270 - ocean
VIRGIN



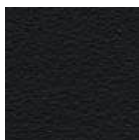
PP120 - red ochre
50% RECYCLED



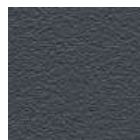
PP340 - fawn
VIRGIN



PP350 - lichen
VIRGIN



PP200 - black
VIRGIN OR
100% RECYCLED



PP100 - Howe grey
100% RECYCLED



PP300 - chalk
VIRGIN OR
50% RECYCLED

CHAIRS

MN1
Backs
Natural wood
veneers / stains

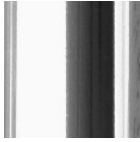


V3 - oak



LW17 - black stain

40/4
SIXE
Frames
Steel



B1 - chrome



B6 - satin black



B7 - black



B9 - alu grey



B10 - Howe grey



B30 - white



B31 - satin white



Any RAL

All RAL colours
available based
upon customer
sample

SIXE
ONLY



Wheat



Ocean



Red Ochre



Fawn



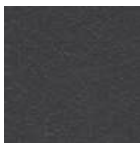
Lichen

SIXE SWIVEL
SIXE LEARN
Base
Polyamide



PA100 - Howe grey

SIXE SWIVEL
SIXE LEARN*
Swing arm*
Gas lift

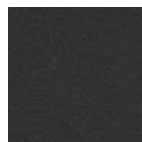


B10 - Howe grey

MN1
Bases



B1 - chrome
- Cantilever only



B6 - satin black



B7 - black



B51 - polished alu

AS100
Bases / seat
frames



B6 - satin black



B7 - black



B51 - polished alu



FABRICS

Enhance your designs with consciously chosen fabrics of top-notch performance and sustainable profiles. If you're seeking a solution that goes beyond standard options, please contact HOWE Customer Service.

40/4
MNI
SixE
AS100



62126

CURA by Gabriel

EMEA + US/CAN price group 1

Composition: 98% post-consumer recycled polyester, 2% polyester
Martindale: 100.000
Washable: 60-74°C
Cleanable: YES

Flammability CAL 117: YES
Added flame retardant: NO
Flammability M: NO
Crib 5: NO
Ecolabel: YES
Oeko-Tex: YES

[VIEW FULL COLOR RANGE](#)

40/4
MNI
SixE
AS100



64030

EVENT by Gabriel

EMEA + US/CAN price group 1

Composition: 100% polyester
Martindale: 100.000
Washable: 60°C
Cleanable: YES

Flammability CAL 117: YES
Added flame retardant: NO
Flammability M: NO
Crib 5: NO
Ecolabel: YES
Oeko-Tex: YES

[VIEW FULL COLOR RANGE](#)

40/4
MNI

SixE
AS100
Needs testing



61095

FIGHTER by Gabriel

EMEA + US/CAN price group 1

Composition: 100% recyclable polyester
Martindale: 130.000
Washable: YES
Cleanable: Only dry

Flammability CAL 117: YES
Added flame retardant: NO
Flammability M: NO
Crib 5: NO
Ecolabel: NO
Oeko-Tex: YES

[VIEW FULL COLOR RANGE](#)

40/4
MNI
SixE
AS100



Wedgwood - IF027

MAIN LINE PLUS by Camira

EMEA + US/CAN price group 1

Composition: 67% wool, 20% flame retardant viscose, 13% viscose
Martindale: ≥50,000
Washable: YES
Cleanable: YES

Flammability CAL 117: YES
Added flame retardant: YES
Flammability M: NO
Crib 5: YES
Ecolabel: NO
Oeko-Tex: YES

[VIEW FULL COLOR RANGE](#)

40/4
MNI
SixE



Seafarer - OOC16

OCEANIC by Camira

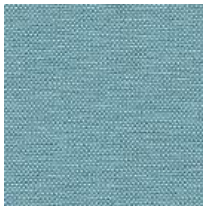
EMEA + US/CAN price group 1

Composition: 100% post-consumer recycled polyester
Martindale: ≥100,000
Washable: 60°C
Cleanable: YES

Flammability CAL 117: YES
Added flame retardant: NO
Flammability M: NO
Crib 5: NO
Ecolabel: YES
Oeko-Tex: YES

[VIEW FULL COLOR RANGE](#)

40/4
MN1
SixE



Tide - QUE12

QUEST by Camira

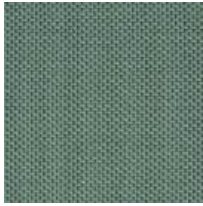
EMEA + US/CAN price group 1

Composition: 100% post-consumer recycled polyester
 Martindale: ≥100,000
 Washable: 60°C
 Cleanable: YES

Flammability CAL 117: YES
 Added flame retardant: NO
 Flammability M: NO
 Crib 5: NO
 Ecolabel: YES
 Oeko-Tex: YES

[VIEW FULL COLOR RANGE](#)

40/4
MN1
SixE
AS100



Joy - REP07

REPLAY by Camira

EMEA + US/CAN price group 1

Composition: 100% post-consumer recycled flame retardant polyester
 Martindale: ≥100,000
 Washable: 60°C
 Cleanable: YES

Flammability CAL 117: NO
 Added flame retardant: YES
 Flammability M: M1
 Crib 5: NO
 Ecolabel: YES
 Oeko-Tex: YES

[VIEW FULL COLOR RANGE](#)

40/4
MN1
SixE



Resin - EGL04

RIVET by Camira

EMEA + US/CAN price group 1

Composition: 100% post-consumer recycled polyester
 Martindale: ≥80,000
 Washable: 60°C
 Cleanable: YES

Flammability CAL 117: YES
 Added flame retardant: NO
 Flammability M: NO
 Crib 5: NO
 Ecolabel: YES
 Oeko-Tex: NO

[VIEW FULL COLOR RANGE](#)

40/4
MN1
SixE



2440-66763

STEP by Gabriel

EMEA + US/CAN price group 1

Composition: 100% Trevira CS
 Martindale: 100.000
 Washable: 60-74°C
 Cleanable: YES

Flammability CAL 117: YES
 Added flame retardant: YES
 Flammability M: M1
 Crib 5: YES
 Ecolabel: YES
 Oeko-Tex: YES

[VIEW FULL COLOR RANGE](#)

40/4
MN1
SixE
AS100



2543-63138

STEP MELANGE by Gabriel

EMEA + US/CAN price group 1

Composition: 100% Trevira CS
 Martindale: 100.000
 Washable: 60-74°C
 Cleanable: YES

Flammability CAL 117: YES
 Added flame retardant: YES
 Flammability M: M1
 Crib 5: YES
 Ecolabel: YES
 Oeko-Tex: YES

[VIEW FULL COLOR RANGE](#)

40/4
MN1
SixE
AS100



Atacama - TAN-0004

TANNERY by Spradling

EMEA + US/CAN price group 1

Composition: Vinyl topcoat, cotton backing
 Martindale: >100.000
 Washable: NO
 Cleanable: YES

Flammability CAL 117: YES
 Added flame retardant: YES
 Flammability M: M2
 Crib 5: NO
 Ecolabel: NO
 Oeko-Tex: NO

[VIEW FULL COLOR RANGE](#)

40/4
MNI
SixE



Blizzard - YS081

XTREME by Camira

EMEA + US/CAN price group 1

Composition: 100% post-consumer recycled flame retardant polyester
 Martindale: ≥100,000
 Washable: 60°C
 Cleanable: YES

Flammability CAL 117: YES
 Added flame retardant: YES
 Flammability M: NO
 Crib 5: YES
 Ecolabel: YES
 Oeko-Tex: YES

[VIEW FULL COLOR RANGE](#)

40/4
MNI
SixE
AS100



Tooting - MLF7

MAIN LINE FLAX by Camira

EMEA + US/CAN price group 2

Composition: 70% virgin wool, 30% flax
 Martindale: ≥50,000
 Washable: NO
 Cleanable: YES

Flammability CAL 117: YES
 Added flame retardant: NO
 Flammability M: NO
 Crib 5: YES
 Ecolabel: YES
 Oeko-Tex: NO

[VIEW FULL COLOR RANGE](#)

40/4
MNI
SixE



Warrior - 466553-045

METAPHOR by Maharam

EMEA + US/CAN price group 2

Composition: 100% polyester
 Martindale: 100,000 double rubs Wyzenbeek
 Washable: NO
 Cleanable: YES

Flammability CAL 117: YES
 Added flame retardant: NO
 Flammability M: NO
 Crib 5: NO
 Ecolabel: NO
 Oeko-Tex: NO

[VIEW FULL COLOR RANGE](#)

40/4
MNI



Skylight

VALENCIA B1 by Spradling

EMEA + US/CAN price group 2

Composition: Vinyl topcoat, cotton backing
 Martindale: >300.000
 Washable: NO
 Cleanable: YES

Flammability CAL 117: YES
 Added flame retardant: YES
 Flammability M: M1
 Crib 5: YES
 Ecolabel: NO
 Oeko-Tex: NO

[VIEW FULL COLOR RANGE](#)

40/4
MNI
SixE
AS100



2424-4031

CRISP by Gabriel

EMEA + US/CAN price group 3

Composition: 93% wool, 7% polyamide
 Martindale: 200 000
 Washable: NO
 Cleanable: YES

Flammability CAL 117: YES
 Added flame retardant: NO
 Flammability M: M1
 Crib 5: NO
 Ecolabel: YES
 Oeko-Tex: YES

[VIEW FULL COLOR RANGE](#)

40/4
MNI
SixE
AS100



2409-64119

FAME by Gabriel

EMEA + US/CAN price group 3

Composition: 95% wool, 5% polyamide
 Martindale: 200 000
 Washable: NO
 Cleanable: Only dry

Flammability CAL 117: YES
 Added flame retardant: NO
 Flammability M: NO
 Crib 5: YES
 Ecolabel: YES
 Oeko-Tex: YES

[VIEW FULL COLOR RANGE](#)

40/4
MNI
SixE
AS100

0682

REMIX 3 by Kvadrat

EMEA + US/CAN price group 3

Composition: 90% new wool, 10% nylon
 Martindale: 100,000
 Washable: NO
 Cleanable: Only dry

Flammability CAL 117: YES
 Added flame retardant: NO
 Flammability M: NO
 Crib 5: NO
 Ecolabel: YES
 Oeko-Tex: NO

[VIEW FULL COLOR RANGE](#)
40/4
MNI
AS100

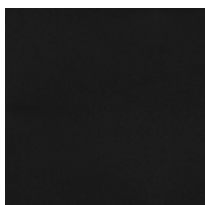
0926

CANVAS 2 by Kvadrat

EMEA + US/CAN price group 4

Composition: 90% new wool, 10% nylon
 Martindale: 100,000
 Washable: NO
 Cleanable: Only dry

Flammability CAL 117: YES
 Added flame retardant: NO
 Flammability M: NO
 Crib 5: NO
 Ecolabel: YES
 Oeko-Tex: NO

[VIEW FULL COLOR RANGE](#)
40/4
MNI
AS100

Black - 41599

ULTRA by Sørensen Leather

EMEA + US/CAN price group 4

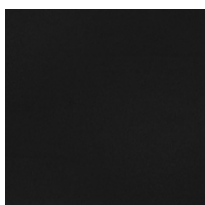
(TANGO), BLACK

Composition: Protected
 Martindale: -
 Washable: -
 Cleanable: -

Flammability CAL 117: YES
 Added flame retardant: NO
 Flammability M: -
 Crib 5: -
 Ecolabel: -
 Oeko-Tex: -

[BLACK ONLY](#)

AS100



Black - 42438

BASIC by Sørensen Leather

EMEA + US/CAN price group 5

(KNIGHT), BLACK

Composition: Protected
 Martindale: -
 Washable: -
 Cleanable: -

Flammability CAL 117: YES
 Added flame retardant: NO
 Flammability M: -
 Crib 5: -
 Ecolabel: -
 Oeko-Tex: YES

[BLACK ONLY](#)
40/4
MNI
Needs
testing40/4
MNI
SixE
AS100

0407

HALLINGDAL 65 by Kvadrat

EMEA + US/CAN price group 5

Composition: 70% new wool,
30% viscose
 Martindale: 100.000
 Washable: NO
 Cleanable: Only dry

Flammability CAL 117: YES
 Added flame retardant: NO
 Flammability M: NO
 Crib 5: YES
 Ecolabel: YES
 Oeko-Tex: NO

[VIEW FULL COLOR RANGE](#)
40/4
MNI
SixE
AS100

0865

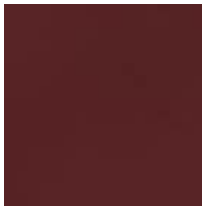
STEELCUT TRIO 3 by Kvadrat

EMEA + US/CAN price group 5

Composition: 90% new wool, 10% nylon
 Martindale: 100.000
 Washable: NO
 Cleanable: Only dry

Flammability CAL 117: YES
 Added flame retardant: NO
 Flammability M: NO
 Crib 5: NO
 Ecolabel: YES
 Oeko-Tex: NO

[VIEW FULL COLOR RANGE](#)

40/4
MNI
AS100

Burgundy - 30317

SAVANNE by Sørensens Leather

EMEA + US/CAN price group LSL

Composition: Semi-aniline
 Martindale: -
 Washable: -
 Cleanable: -

Flammability CAL 117: -
 Added flame retardant: -
 Flammability M: -
 Crib 5: -
 Ecolabel: -
 Oeko-Tex: YES

[VIEW FULL COLOR RANGE](#)
40/4
MNI
AS100

Altweiss - 41576

ULTRA by Sørensens Leather

EMEA + US/CAN price group LUCL

(TANGO), COLOURED

Composition: Protected
 Martindale: -
 Washable: -
 Cleanable: -

Flammability CAL 117: -
 Added flame retardant: -
 Flammability M: -
 Crib 5: -
 Ecolabel: -
 Oeko-Tex: -

[VIEW FULL COLOR RANGE](#)




AS TABLES
FACTOR
FOLDING SURFACES
MOVEO
SIMPLA
TEMPEST

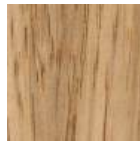
Tops
Natural wood
veneers / Stains



V1 - maple



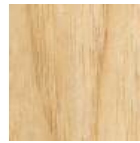
V2 - beech



V3 - oak



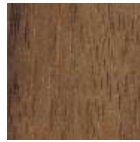
V5 - cherry



V12 - ash



V13 - birch



V15 - walnut

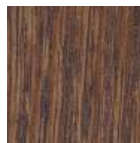
AS tables standard: V2 beech, V3 oak ONLY

Factor standard: V3 oak, LW17 black stain, LW30 white stain ONLY

Folding Surfaces standard: V3 oak ONLY



LW17 - black stain



LW25 - walnut stain



LW30 - white stain



Any RAL

All RAL colours available
based upon customer sample

AS TABLES
FACTOR
MOVEO
SIMPLA
TEMPEST

Tops
Wood grain
laminates



L42 - beech



L43 - oak



L55 - walnut



L50 - grey oak

AS tables standard:
L42 beech, L43 oak ONLY

AS TABLES
FACTOR
FOLDING SURFACES
MOVEO
SIMPLA
TEMPEST
USU

Tops
Coloured
laminates



L310 - white



L420 - grey



L110 - Howe grey



L210 - black

Folding Surfaces standard:
L310 white, L210 black ONLY



L500 - metal slate



L600 - stone grey



Any coloured
laminates*

*Any coloured laminates
does not apply to Usu and
Folding Surfaces

AS TABLES
FACTOR
MOVEO
SIMPLA
TEMPEST

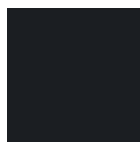
Tops
Coloured
nano laminates



NL350 - eggshell white



NL450 - warm grey



NL200 - black

FOLDING SURFACES
MOVEO
SIMPLA
TEMPEST
USU

Tops
Melamines



M310 - white

AS TABLES
FACTOR
MOVEO
SIMPLA
TEMPEST

Tops
Linoleums



FL200 - black



TABLES

TUTOR

Tops
Bendable
compact
laminates



F300 - white



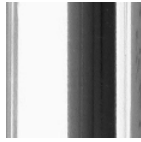
F200 - black



Any bendable
compact laminate

**SIMPLA
TEMPEST
TUTOR**

Bases
Steel



B1 - chrome



B6 - satin black



B7 - black



B9 - alu grey



B10 - Howe grey



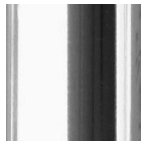
B30 - white



B31 - satin white

USU

Bases
Steel



B1 - chrome



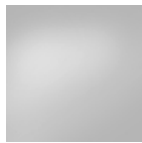
B7 - black

MOVEO

Bases
Aluminum



B6 - satin black



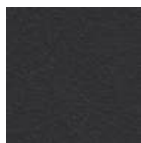
B51 - polished alu
- feet only



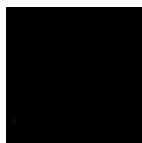
B52 - anodized alu
- columns only

AS TABLES

Bases
Steel



B6 - satin black



B7 - black



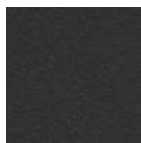
B31 - satin white
- columns only



B51 - polished alu
- bases only

FOLDING SURFACES

Bases
Steel



B6 - satin black

FACTOR

Bases
Natural wood
veneers / Stains



V3 - oak

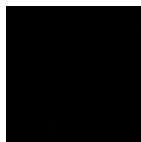


LW17 - black stain



LW30 - white stain

Bases
Steel



B7 - black



B9 - alu grey



B30 - white

Non standard powder coats available on request





COLOUR REFERENCE ONLY
Variations in colours and structures may occur
Subject to ongoing changes and adjustments